



Biodiversity Without Boundaries New Orleans

The NatureServe Network
Conservation Conference
April 6-10, 2014



A Special Thanks to Our Co-Host!

Biodiversity Without Boundaries 2014 is co-hosted by the Louisiana Department of Wildlife and Fisheries' Natural Heritage Program. LDWF Secretary Robert Barham will open the conference on Monday morning. A farmer, army veteran, and former mayor and state senator, Barham oversees the agency responsible for managing fish and wildlife habitat in a state well known for its bountiful natural resources. Appointed by Governor Bobby Jindal in 2008, his environmental acumen includes accolades from state and national conservation groups, business organizations, and academic institutions.



Active involvement by our network member programs such as the Louisiana Natural Heritage Program—both at the conference and throughout the planning stages—is crucial to making BWB a can't-miss event.

Our deepest thanks and appreciation go out to Nicole Lorenz, Amity Bass, and their colleagues from the Louisiana Natural Heritage Program! Learn more about them at <http://www.wlf.louisiana.gov/wildlife/louisiana-natural-heritage-program>

THANK YOU!

Our Mission

To provide the scientific basis for effective conservation.

NatureServe and its network members collect and maintain a unique body of scientific information about species and ecosystems. Our scientists, technologists, and other professionals build on this knowledge by providing information, tools, and biodiversity expertise for local, national, and global conservation needs.

NatureServe • 4600 N. Fairfax Drive, 7th Floor • Arlington, VA 22203 • 703-908-1802 • www.natureserve.org

Acknowledgments

Thanks to all our featured speakers and presenters for your generosity in sharing your time and knowledge.

Thank you to the NatureServe staff who provided the principal planning, organization, and staffing for BWB2014: Erin Chen, Kyle Copas, Maria Clara de Araujo, Michael Jewell, Don Kent, Pat Leighty, Sebastian Montes, Elizabeth Primus, Alexandra Sanchez, Ravi Shankar, Sam Sheline, and Suzanne Young.

Cover photo: by Ingrid Taylor - American white pelican - *Pelicanus erythrorhynchos*

Welcome to Biodiversity Without Boundaries 2014!

Biodiversity Without Boundaries is where the NatureServe network, our partners and our friends gather to celebrate our successes, collaborate on new initiatives, share our innovations, and design the future. Throughout the week, we will be emphasizing education, working sessions, and networking. Join us in our discussions about how we are providing, and how we can continue to provide, the scientific basis for effective conservation.

This year, as we convene in historic—and biologically diverse—New Orleans, the conference explores issues, challenges, and solutions that transcend physical, political, jurisdictional, and ecological boundaries. Sessions include botany, zoology, and ecology workshops, capacity-building, restoration, conservation planning, data access, scorecards, technology, and bats. Citizen science and ecosystem services receive special attention.

We couldn't be more excited to have you here with us. Our individual efforts are informed by our collective intelligence and enable collaborations that achieve conservation across boundaries and at scales much bigger than any of us can accomplish alone. While this conference's participants represent a wide range of disciplines and organizations from around the world, we share one thing in common: an unwavering commitment to effective science-based conservation. Thank you for joining us!

Featured Speakers

Andrew Bennett

Keynote Speaker, Wednesday, April 9

Andrew Bennett's "transformational magic" is both dazzling and inspirational—a message he imbues with a sense of amazement and lessons in leadership, loss, and innovation. After a childhood spent on a Michigan cherry farm, Andrew's academic career moved from Michigan State University to the University of Wisconsin, to New York University, where he studied under W. Edwards Deming, the father of modern quality management. It was during an early stint as personal assistant to Ross Perot that the future presidential candidate spurred Andrew to fold his magic into his professional career. That career has since spanned the public and private sphere, including the likes of AT&T, Motorola, the Department of Defense, Sun Microsystems, Lockheed Martin, and Abbott Laboratories. His crowning achievement as a magician came in 2000, when he was inducted into London's Magic Circle, the highest honor in the magic community.



Mary Klein

Welcome and Opening Remarks, Monday, April 7

Mary Klein has been the president and CEO of NatureServe since 2006. Prior to joining NatureServe as vice president of network operations in 2000, she was director of the Colorado Natural Heritage Program and served as chair of the board of the Association for Biodiversity Information, NatureServe's predecessor organization. Mary began her career with The Nature Conservancy and has more than 20 years of experience in the field of conservation, including regional program development in the western United States, Canada, and Latin America.



2014 NatureServe Member Awards

Networking Reception: Monday, April 7 - 6:00p - Riverview Room

NatureServe recognizes outstanding achievements to promote and motivate activities that enhance the network. This year we will present awards for Conservation Impact, Scientific or Technological Achievement, and Network Collaboration or Mentoring. These awards honor our members' contributions to informed conservation decision-making. Awards will be presented at a Monday night reception. Award recipients will receive a plaque to display in their offices along with a letter of recognition copied to their managing agency director.

2013 Award Winners

Natural Heritage New Mexico

North Carolina Natural Heritage Program

Oregon Biodiversity Information Center

2014 NatureServe Conservation Award

Conference Dinner: Tuesday, April 8 - 7:00p - La Nouvelle East/West Ballrooms

The NatureServe Conservation Award recognizes the achievements of a key individual or organization who, through their actions or example, has advanced public understanding and appreciation of biodiversity conservation, and thus helped to advance NatureServe's mission. Honorees have significantly raised the public profile of the importance of biodiversity conservation, exhibited innovation and creativity in their approach and impact, and demonstrated leadership in advancing science-based conservation. They instill in others a respect for scientific information and provide inspiration to take action toward conserving biodiversity.

Previous Winners

2013 Walt Reid, Ph.D.

2012 William D. Ruckelshaus

2011 Edward O. Wilson, Ph.D.

2010 Robert E. Jenkins, Ph.D.

2014 Honoree: Jane Lubchenco



photo by Joy Leighton

We are honored to present this year's NatureServe Conservation Award to Jane Lubchenco, Ph.D., champion of science-based policymaking and steadfast advocate for the freedom and duty to communicate unadulterated science to policy makers, the media, and the public. A decades-long research career as one of the nation's most prominent marine biologists culminated in her 2009 appointment as the first woman to lead the U.S. National Oceanic and Atmospheric Administration. During her tenure, she vigorously defended science as the key to responding to the Deepwater Horizon oil disaster and ending overfishing in U.S. waters and the High Seas, and steered NOAA toward its first Scientific Integrity Policy, which came amid a broader push of "returning science to its rightful place" in government. The trailblazing policy forbids the suppression, distortion and misuse of science and empowers NOAA scientists to actively engage the public.

Highlights from her long list of accomplishments include terms as president of the International Council for Science (the first woman to do so), the American Association for the Advancement of Science, the Ecological Society of America, and the National Science Board.

Notes

Session abstracts were emailed to all participants in advance. To review a printed copy, please visit the registration desk. Abstracts include contact information and co-authors. Half-hour breaks with complimentary service occur each day in the morning and afternoon.

Field Trips – Sunday, April 6

6:00a to 5:30p	Barrier Island Tour
7:00a to 8:00p	Grand Isle Birding Excursion
8:00a to 5:00p	Sandy Hollow Wildlife Management Area
	Lake Ramsey Wildlife Management Area and Preserve
1:30p to 5:30p	Swamp Tour

Auxiliary Meetings

Sunday, 6p to 9p Royal Salon A	Joint Section Council Meeting, hosted by NatureServe Canada. By invitation only.
Thursday, 12p to 5p Royal Salon A	iMapInvasives Business Meeting Meg Wilkinson, New York Natural Heritage Program. By invitation only.

Poster Presentations

Posters will be displayed in the 5th floor Orleans Room (also the networking room), throughout the conference, except for presentation in the Riverview Room during the Monday evening networking reception

**Engdangered Spice Plants
of Southern Nigeria:
The Need for Conservation**
*Aniefiok Osuagwu,
University of Calabar, Nigeria*

**Vulnerability of Midwest
National Parks to Climate
and Land Use Change**
*Esther Stroh,
United States Geological Survey*

**Creating Colorado's
Comprehensive Threatened and
Endangered Plant Species Database:
A Ten Year Case Study**
Jill Handwerk, Colorado NHP

**Biodiversity Discovery
in the National Parks**
*Sally Plumb,
National Park Service*

**iMapInvasives: Managing
Invasive Species Data in Arizona**
*Jami Kuzek,
Arizona Game and Fish*

**Population Status Assessment
of *Agalinis decemloba* (Greene)
Pennell in North Carolina,
Tennessee, and Virginia**
*Milo Pyne and Carl W. Nordman
(NatureServe), and Bruce Sorrie
(North Carolina Department of
Environmental and Natural Resources)*

**Pennsylvania iMapInvasives:
Current Project Snapshot**
*Amy Stauffer,
Western PA Conservancy*

**Carolina and Georgia Sandhills
Ecological Site Descriptions,
NatureServe in partnership
with the Natural Resources
Conservation Service**
*Carl W. Nordman and Michelle
Clendenin, NatureServe and USDA*

**Field Guide to Natural Communities:
Communicating Science Effectively
to Park Managers and Visitors**
Judy Teague, NatureServe

**BWB
2015**

**Join us again next year
in the lakeside resort of Traverse City, Michigan!**
April 19 - 23, 2015




Monday, April 7

	Monday, April 7				
	Royal Salon C	Royal Salon D	Cabildo	Queen Anne Ballroom	Beauregard
8:30a to 9:30a	Welcome and Opening Remarks—Queen Anne Ballroom				
10:00a to 10:45a	Alternative Futures and Adaptive Strategies for Conservation <i>Darin Liston, Marstel-Day</i>	Biodiversity as an Indicator of Sustainable Environmental Quality on the Guatemalan Costa Este del Pacifico <i>Vanessa Dávila, Manolo García, and Airam López, Centro de Datos para la Conservación Guatemala</i>	Weaving the Network: Member Organizations as Hubs and Recruiters <i>Mary Klein, NatureServe</i>	Notes from the Field and Science Priorities <i>Pat Comer, Bruce Young, and Anne Frances, NatureServe</i>	
10:45a to noon	Shared Interests, Shared Solutions: Partnering with Department of Defense for Conservation <i>Jennifer Allen and Rich Engel, Marstel-Day</i>	Landscape: Function, Value, and Fundraising <i>Lori Scott and Erin Chen, NatureServe</i>			
12p-1:30p	Lunch on Your Own—Enjoy!				
1:30p to 2:15p	IUCN Red List of Ecosystems <i>Pat Comer and Carmen Josse, NatureServe</i>	Sostenibilidad del Sistema Departamental de Areas Protegidas del Valle del Cauca <i>Natalia Gomez, Corporación Autónoma Regional del Valle del Cauca</i>	The Role of the Network in Conservation: Staying Relevant in the 21st Century <i>Gary Knight, Florida Natural Areas Inventory</i>	NatureServe Network Mapping: Network and Partner Value Exchange <i>Don Kent, NatureServe; Jim Mackenzie, Ontario CDC</i>	Botany and Zoology Methodology Workshop <i>Bruce Young, Margaret Ormes, and Anne Frances, NatureServe</i>
2:15p to 3:00p		Restauración Corredor río Cauca: Diseño de Herramientas de Manejo del Paisaje-Valle del Cauca <i>María Isabel Salazar, Corporación Autónoma Regional del Valle del Cauca</i>			

	Royal Salon C	Royal Salon D	Cabildo	Queen Anne Ballroom	Beauregard
3:30p to 5:00p	Terrestrial Ecology Workshop <i>Milo Pyne, Judy Teague, and Don Faber-Langendoen, NatureServe</i>	Zoology Workshop <i>Bruce Young, NatureServe</i>	Making Relationships Meaningful: How to Make Any Situation a Fundraising Opportunity <i>Erin Chen, NatureServe; Dave Anderson and Robert Schorr, Colorado NHP; Anibal Ramirez, Pronatura Veracruz; Tom Smith, Virginia NHP; Brian Klatt, Michigan Natural Features Inventory; Nicole Firlotte, Manitoba Conservation and Water Stewardship; DJ Evans, New York NHP</i>	NatureServe Vista: Integrating Network Data and Science With Planning <i>Patrick Crist, NatureServe; Maria Patrocino Alba, Pronatura Sur; and Yogani Govender, Conservation Trust of Puerto Rico</i>	Botany Workshop <i>Anne Frances, NatureServe</i>
6p-7:30p	Networking Reception & Awards—La Nouvelle East/West Ballrooms				

7



Tuesday, April 8					
	Royal Salon C	Royal Salon D	Cabildo	Queen Anne Ballroom	Beauregard
8:30a to 9:00a	Latin America and Caribbean Taxonomy Workshop <i>Bruce Young, NatureServe</i>	If We Could Start Again ... : Designing an Organization to Conserve Biodiversity <i>NatureServe Network Leadership Participants</i>	Guiding the Restoration of Resilient Ecosystems <i>Kathy Goodin and Don Faber-Langendoen, NatureServe; Becky Allee, National Oceanic and Atmospheric Administration; Tony Chatwin, National Fish and Wildlife Federation; Matt Love, The Ocean Conservancy; Jorge Brenner, The Nature Conservancy; Scott Eustis, Gulf Restoration Network; Jason Bulluck, Virginia NHP</i>	Citizen Science <i>Healy Hamilton and Margaret Ormes, NatureServe; Scott Loarie, iNaturalist; Cullen Hanks, Texas Parks and Wildlife; Patrick Henry, NatureServe Canada; Dave Clark, Parks Canada; Rob Stevenson, University of Massachusetts</i>	Saving All the Parts: An Assessment of Conservation Lands Using Ecological Systems <i>Andy Cutko, Maine Natural Areas Program</i>
9:00a to 9:30a					Ecosystem Services Valuation and Social Investment in a Tropical Cloud Forest in Veracruz, Mexico <i>César Raziel Lucio Palacio, Pronatura Veracruz; Pierre Makondoko, Instituto de Ecologia</i>
9:30a to 10:00a					Texas Mapping Systems: Application and Dissemination of Big Data <i>Amie Treuer-Kuehn, Texas Parks and Wildlife</i>
10-10:30a	Break—Queen Anne Parlor and Bonnet Carre				

	Royal Salon C	Royal Salon D	Cabildo	Queen Anne Ballroom	Beauregard
10:30a to 11:00a	An Ecological Systems-based Community Classification for Arkansas <i>Thomas Foti, Arkansas Natural Heritage Commission</i>	Engaging Stakeholders Through Partners Meetings <i>Allan Cox, Montana NHP and Dave Anderson, Colorado NHP</i>	Guiding the Restoration of Resilient Ecosystems <i>Kathy Goodin and Don Faber-Langendoen, NatureServe; Becky Allee, National Oceanic and Atmospheric Administration; Tony Chatwin, National Fish and Wildlife Federation; Matt Love, The Ocean Conservancy; Jorge Brenner, The Nature Conservancy; Scott Eustis, Gulf Restoration Network; Jason Bulluck, Virginia NHP</i>	Citizen Science <i>Healy Hamilton and Margaret Ormes, NatureServe; Scott Loarie, iNaturalist; Cullen Hanks, Texas Parks and Wildlife; Patrick Henry, NatureServe Canada; Dave Clark, Parks Canada; Rob Stevenson, University of Massachusetts</i>	Creating a Watershed Planning Toolbox in Colorado <i>Jeremy Sultenfuss, Colorado NHP</i>
11:00a to 11:30a	Monitoring Plant Populations in the Adirondack Alpine <i>Tim Howard, New York NHP</i>				Interactive Platform for Assessing Local Herpetofauna <i>Ixchel Shesena, Pronatura Veracruz</i>
11:30a to noon	Biodiversity Database for Field Stations <i>Elizabeth Rogers, Bamfield Marine Sciences Centre</i>				Conservation prioritization as a tool for discovering new populations of endangered amphibian species <i>Rafael Rodriguez, Anibal Ramirez, and Kashmir Wolf, Pronatura Veracruz</i>
noon-1:30p	Lunch on Your Own—Enjoy!				
1:30p to 2:30p	Invasive Species Symposium <i>Jennifer Dean (moderator), New York NHP; Antonio Tovar, Centro de Datos para la Conservación del Perú; Heidi Krahling and Brent Kinal, New York NHP; Frank Price, Florida Natural Areas Inventory; Amy Stauffer, Pennsylvania NHP</i>	Brokering Solutions to Meet Business Needs for Biodiversity Data <i>Lori Scott and Leslie Honey, NatureServe; Bruce Snyder, Range Resources; JiSu Bang, Syngenta; Ian Voparil, IPIECA; Nicole Lorenz, Louisiana NHP; Greg Podniesinski, Pennsylvania NHP; Jason Bulluck, Virginia NHP</i>	Guiding the Restoration of Resilient Ecosystems <i>Kathy Goodin, Pat Comer, and Rickie White, NatureServe; Becky Allee, National Oceanic and Atmospheric Administration; Tony Chatwin, National Fish and Wildlife Federation; Matt Love, The Ocean Conservancy; Jorge Brenner, The Nature Conservancy; Scott Eustis, Gulf Restoration Network; Jason Bullock, Virginia NHP</i>	Citizen Science <i>Healy Hamilton and Margaret Ormes, NatureServe; Scott Loarie, iNaturalist; Cullen Hanks, Texas Parks and Wildlife</i>	Developing Ecosystem Service Markets to Accomplish Conservation Objectives: Roles for the NatureServe Network <i>Katie Riley and Jen Newmark, Nevada NHP; Jeremy Sueltenfuss and Dave Anderson, Colorado NHP</i>
2:30p to 3:00p					Vulnerability of the Coquí Llanero, Eleutherodactylus juanariveroi, Habitat to Sea Level Rise <i>Daniel Dávila Casanova, University of Puerto Rico</i>
3-3:30p	Break—Queen Anne Parlor and Bonnet Carre				

	Royal Salon C	Royal Salon D	Cabildo	Queen Anne Ballroom	Beauregard
3:30p to 4:15p	Invasive Species Symposium <i>Jennifer Dean (moderator), New York NHP; Antonio Tovar, Centro de Datos para la Conservación del Perú; Heidi Krahling, and Brent Kinal, New York NHP; Frank Price, Florida Natural Areas Inventory; Amy Stauffer, Pennsylvania NHP</i>	Brokering Solutions to Meet Business Needs for Biodiversity Data <i>Lori Scott and Leslie Honey, NatureServe; Bruce Snyder, Range Resources; JiSu Bang, Syngenta; Ian Voparil, IPIECA; Nicole Lorenz, Louisiana NHP; Greg Podniesinski, Pennsylvania NHP; Jason Bulluck, Virginia NHP</i>	Engaging Landscape Conservation Cooperatives <i>Patrick Crist, NatureServe; John Tirpak, Gulf Coastal Plains and Ozarks LCC; and Dave Anderson, Colorado NHP</i>	Citizen Science: Examples Across the Network and iNaturalist Demo <i>Healy Hamilton and Margaret Ormes, NatureServe; Scott Loarie, iNaturalist; Cullen Hanks, Texas Parks and Wildlife; Rob Stevenson, University of Massachusetts</i>	Statewide Assessment of Species and Community Vulnerability to Sea Level Rise in Florida <i>Jon Oetting, Florida Natural Areas Inventory</i>
4:15p to 5:00p					Life History Traits and Recent Range Shifts can Predict Extinction Risk due to Climate Change <i>Richard Pearson, University College London</i>
7p to 9p	Dinner and Conservation Award—La Nouvelle East/West Ballrooms				



Wednesday, April 9

	Royal Salon C	Royal Salon D	Cabildo	Queen Anne Ballroom	Beauregard
8:30-10a	Plenary Speaker: Andrew Bennett—Queen Anne Ballroom				
10:15a to 11:00a	Plant Conservation Opportunities and Challenges <i>Anne Frances (moderator), NatureServe; Guy Jolicoeur, Quebec CDC; Alan Weakley, The University of North Carolina Herbarium; Kathryn Kennedy, The Center for Plant Conservation; Wayne Padgett, The Bureau of Land Management; Leah Oliver, NatureServe</i>	Social Responsibility and Community Engagement <i>Shane Ford, British Columbia Environmental Assessment Office; Fadi Farhat and Anibal Ramírez, Pronatura Veracruz; Bridget Henning, Illinois Department of Natural Resources; Renee Rondeau, Colorado State University</i>	What's the Score? Turning Biodiversity Scorecards into Dynamic Dashboard Indicators <i>Healy Hamilton, Xuemei Han, Lori Scott, and Bruce Young, NatureServe</i>	Deploying the Ecosystem Services Framework for Restoration, Mitigation, and Climate Change Adaptation: The Mississippi River and Delta and the Gulf of Mexico <i>Jonathan Kochmer and David Batker, Earth Economics</i>	Parks Canada, NatureServe Canada, and NatureServe Partnership Overview and EO-Driven Decision-making <i>Patrick Henry, NatureServe Canada; Dave Clark, Parks Canada Association, and Shara Howie, NatureServe</i>
11:15a to noon				We Value the Earth: Earth Economics' Ecosystem Valuation Toolkit <i>Jonathan Kochmer, Earth Economics</i>	A Conservation Assessment of Odonata for the Northeastern United States <i>Erin White, New York NHP</i>
noon-1:30p	Lunch on Your Own—Enjoy!				

	Royal Salon C	Royal Salon D	Cabildo	Queen Anne Ballroom	Beauregard
1:30p to 2:15p	Design of the Monitoring Protocol for Estimating Ecological Integrity in Priority Jungles of the Alliance Mexico REDD + Priority Site Puuc-Chênes (Campeche-Yucatan) <i>Josefina Gonzalez and Gerardo Garcia Contreras, Pronatura Yucatan</i>	Bats Without Borders: Realizing a Global Bat Database <i>Dave Waldien, Bat Conservation International; Ara Monadjem, Bat Conservation Africa; Luis Aquirre, Centro de Biodiversidad y Genética, Universidad Maor de San Simon; Rayo McCollough, Natural Heritage New Mexico; Bob Gottfried, Texas Parks and Wildlife; Rick Sherwin, Christopher Newport University; Robert Schorr, Colorado NHP</i>	Spatial Modeling, Ecological Forecasts, and Biodiversity Response to Climate Change <i>Healy Hamilton, NatureServe; Patrick McIntyre, California Department of Fish and Wildlife; Scott Loarie, Stanford University; Elaine Leslie, National Park Service; and Miguel Fernandez, University of California-Berkeley</i>	How to Use Ecosystem Services Valuation for Restoration <i>Jonathan Kochmer and Nora Wahlund, Earth Economics; John Hoal and Derek Hoeferlin, Washington University; and Dale Morris, Royal Netherlands Embassy</i>	Conservation on Managed Forest Lands <i>Amity Bass, Louisiana NHP; Amy Knight, Florida Natural Areas Inventory; Jessica Homyack, Darren Miller, and Mike Rochelle, Weyerhaeuser Company</i>
2:15p to 3:00p	Early Warning System for the Prevention, Control and Combat of Forest Fires in the Yucatan Peninsula <i>Wilfrido Gomez and Gerardo Garcia Contreras, Pronatura Yucatan</i>				
3-3:30p	Break—Queen Anne Parlor and Bonnet Carre				
3:30p to 5:00p	iMap Development Meeting <i>Invitation Only</i>	Bats Without Borders: Realizing a Global Bat Database <i>Dave Waldien, Bat Conservation International; Ara Monadjem, Bat Conservation Africa; Luis Aquirre, Centro de Biodiversidad y Genética, Universidad Maor de San Simon; Rayo McCollough, Natural Heritage New Mexico; Bob Gottfried, Texas Parks and Wildlife; Rick Sherwin, Christopher Newport University; Robert Schorr, Colorado NHP</i>	Spatial Modeling, Ecological Forecasts, and Biodiversity Response to Climate Change <i>Healy Hamilton, NatureServe; Patrick McIntyre, California Department of Fish and Wildlife; Scott Loarie, Stanford University; Elaine Leslie, National Park Service; and Miguel Fernandez, University of California-Berkeley</i>	How to Use Ecosystem Services Valuation for Restoration <i>Jonathan Kochmer and Nora Wahlund, Earth Economics; John Hoal and Derek Hoeferlin, Washington University; and Dale Morris, Royal Netherlands Embassy</i>	Conservation on Managed Forest Lands <i>Amity Bass, Louisiana NHP; Amy Knight, Florida Natural Areas Inventory; Jessica Homyack, Darren Miller, and Mike Rochelle, Weyerhaeuser Company</i>
5:00p	Silent Auction winners announced—Orleans				
5:30p to 6:30p	LAC Science Planning Meeting—Salon D				



Thursday, April 10

	Royal Salon A	Royal Salon B	Royal Salon C	Royal Salon D
8:30a to 9:00a	Stakeholders Planning and Analysis <i>Don Kent, Carmen Josse, and Cameron Scott, NatureServe (limited to 24 pre-registrants)</i>	Biotics 5: Adventures in Advanced Editing <i>Whitney Weber, NatureServe</i>	Making Ecosystem Services and Crediting Programs work for U.S. Transportation Agencies <i>Jimmy Kagan, Oregon Biodiversity Information Center</i>	How to Use Ecosystem Services Valuation for Restoration <i>Jonathan Kochmer and Nora Wahlund, Earth Economics; John Hoal and Derek Hoeferlin, Washington University; and Dale Morris, Royal Netherlands Embassy</i>
9:00a to 9:30a			Multi-species Distribution Modeling to Inform Wind Energy Siting <i>Matthew Schlesinger, New York NHP</i>	
9:30a to 10:00a			Data Quality Dictates Effectiveness of Opportunistic Conservation Strategies <i>Nathan Sutton, University of Tennessee</i>	
10-10:30a	Break—Queen Anne Parlor and Bonnet Carre			
10:30a to 11:15a	Stakeholders Planning and Analysis <i>Don Kent, Carmen Josse, and Cameron Scott, NatureServe (limited to 24 pre-registrants)</i>	Definition of Biological Corridors for Jaguar (Panthera Onca) in the Yucatan Peninsula <i>Gerardo Garcia, Pronatura Yucatan</i>	Being a Bird in North America, North of Mexico <i>Robert Alvo</i>	How to Use Ecosystem Service Valuation for Restoration <i>Jonathan Kochmer and Nora Wahlund, Earth Economics; John Hoal and Derek Hoeferlin, Washington University; and Dale Morris, Royal Netherlands Embassy</i>
11:15a to noon		Conservation and Restoration of Reddish Egret Critical Wintering Sites in Mexico: Phase I <i>Alfredo Alvarez, Pronatura Noreste</i>	Social Media for Scientists: How to Share Information and Promote Your Organization <i>Sam Sheline, NatureServe</i>	
noon-1:30p	Wrap-up and Farewell—Reception area			

ExxonMobil
is proud to support
NatureServe
in its conservation
mission.

Thanks to Our Sponsors!



improving **agriculture**

improving **lives**

In the hands of farmers, better seeds can help make our planet more secure. Each day, as the world's population continues to grow, nearly a billion people go to bed hungry. But with the right tools, farmers can grow more food for their families, their communities and people everywhere.

That's improving agriculture. That's improving lives.
And that's what Monsanto is all about.

MONSANTO



Learn more at **MONSANTO.COM**

Monsanto and Vine Design® is a registered trademark of Monsanto Technology LLC. ©2014 Monsanto Company.

Thanks to Our Sponsors!

PROTECTING THE
PLANET
IS EVERYONE'S
JOB.



WE AGREE.

**Chevron is proud to support
NatureServe's Biodiversity
Without Boundaries conference.**

The places we work are also the places we live. So we're committed to preserving the environment wherever we operate. We continually work to conserve natural resources and limit our environmental impact. Protecting the environment is always at the forefront of our minds. Because it only makes sense to take care of our home.

Learn more at chevron.com



Human Energy®

CHEVRON, THE CHEVRON LOGO and HUMAN ENERGY are registered trademarks of Chevron Intellectual Property LLC. © 2014 Chevron U.S.A. Inc. All rights reserved.

14

How do we preserve biodiversity?

☐ Farm less

☐ Farm more productively

syngenta®

Farming less is not an option. World population will increase by 2 billion by 2050. Can we grow all the food we need without taking new land into cultivation and losing biodiversity? At Syngenta, we believe the answer is yes. We develop new, high-yielding seeds and better ways to protect crops from insects, weeds and disease. So farmers can get more from existing land, and preserve ecosystems. In fact, we're going further with programs that help growers ensure that wild plants, insects and birds can flourish alongside crops. It's just one way we're helping to meet the challenge of the future: to grow more from less. To find out more, please visit us at www.growmorefromless.com

© 2013 Syngenta International AG, Basel, Switzerland. All rights reserved. The SYNGENTA Wordmark and BRINGING PLANT POTENTIAL TO LIFE are registered trademarks of a Syngenta Group Company. www.syngenta.com

Bringing plant potential to life®

Thanks to Our Sponsors!



At Weyerhaeuser, we're applying science to sustainability.

We're doing cutting-edge ecological research in collaboration with leading universities. Better yet, we're turning ideas into action, building diverse, resilient forests on more than 20 million acres of land.

GROWING A TRULY GREAT COMPANY
weyerhaeuser.com



15



VIRGINIA NATURAL HERITAGE PROGRAM

Thanks to Our Sponsors!

HELP PROTECT OUR OCEANS!



FIRST EVER BLUE CARBON CALCULATOR



THE OCEAN FOUNDATION




Created by The Ocean Foundation this blue carbon calculator helps you naturally offset your greenhouse gas emissions in the ocean through the restoration and protection of seagrass!

- Seagrass meadows support tourism, food security, recreational and commercial fishing
- Seagrass meadows help prevent shoreline erosion and offer protection from destructive storms
- Seagrass meadows are homes to several marine animals such as manatees and a food source for animals such as sea turtles
- Seagrass meadows can store up to 83,000 metric tons of carbon per square kilometer compared to forests which store about 30,000 metric tons per square kilometer
- Seagrass meadows are being destroyed at a rapid pace by human activities such as boating and dredging.

Help protect our oceans and seagrass today!

www.seagrassgrow.org • www.oceanfdn.org

PHOTOS – LEFT: Paul Nicklen / National; RIGHT: Brian J. Skerry / National Geographic Stock

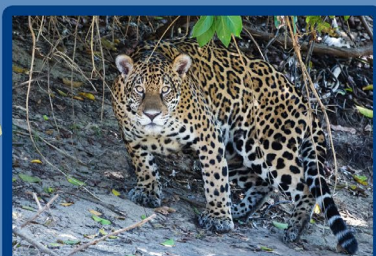


EXPERIENCE YOUR AMERICA

National Park Service
Natural Resource Stewardship and Science
Department of the Interior

The National Park Service supports efforts to discover the biodiversity of our parks through public involvement. Our goals include engagement of more parks in biodiversity discovery efforts; participation by diverse audiences, especially next generation stewards and scientists; and development of partnerships with multiple stakeholders. Since 2011 83 parks have conducted such activities, involving 17,500 participants, and discovering 5,200 species.
<http://www.nature.nps.gov/biology/biodiversity/index.cfm>

Keller»Benefit
Services



The NatureServe Network

Connecting Science with Conservation
Across the Western Hemisphere
(and beyond)



Hotel Monteleone

Contact our sales team
to plan your event!

504-523-3341 800-535-9595
FAX 504-681-4491



FLOOR 17

1. VIEUX CARRE ROOM

FLOOR 16

1. RIVERVIEW ROOM
2. POOL
3. FITNESS CENTER

FLOOR 2

1. GALLIER SALON
2. BEAUREGARD SALON
3. PONTALBA SALON
4. URSULINE SALON
5. THE BOARD ROOM
6. CABILDO SALON
7. CATHEDRAL SALON
8. PRESBYTERE SALON

MEZZANINE A

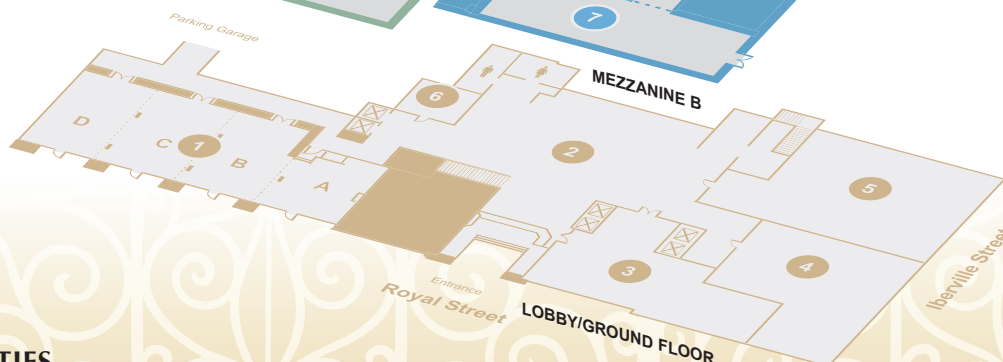
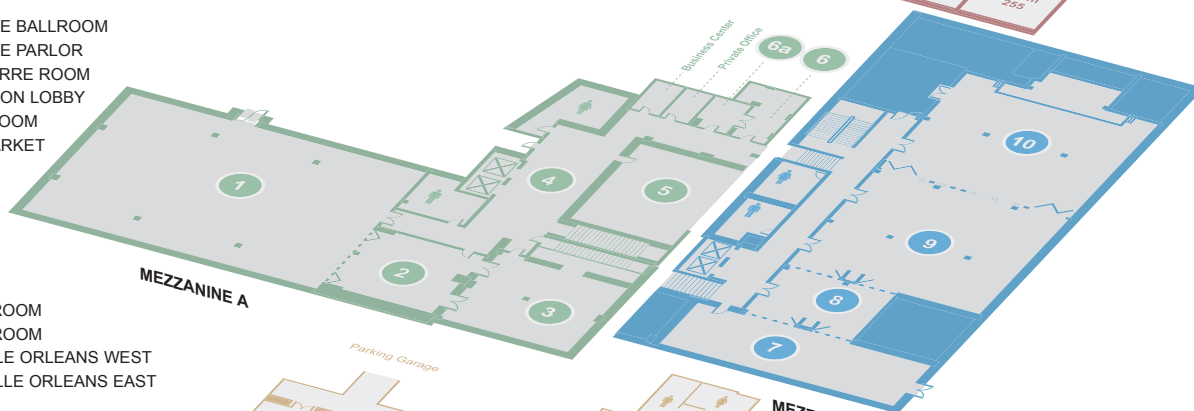
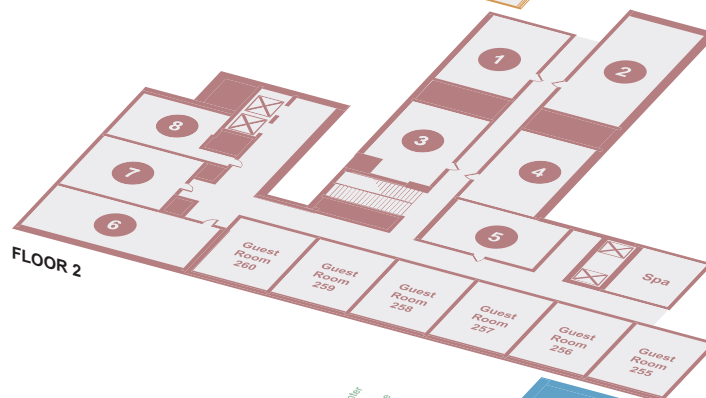
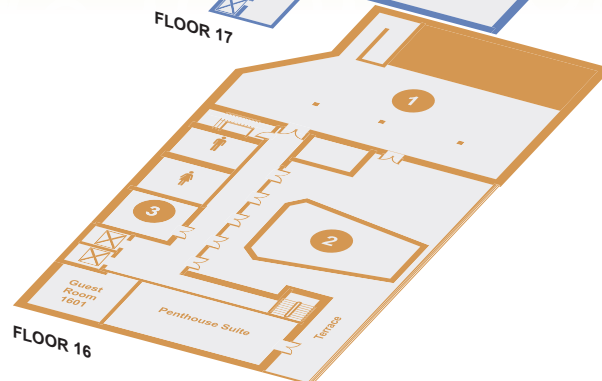
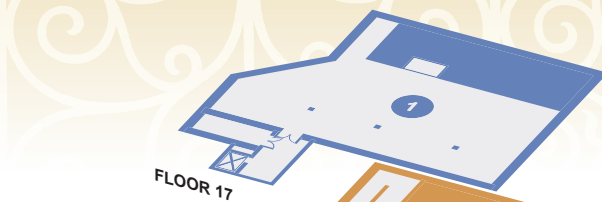
1. QUEEN ANNE BALLROOM
2. QUEEN ANNE PARLOR
3. BONNET CARRE ROOM
4. REGISTRATION LOBBY
5. ORLEANS ROOM
6. FRENCH MARKET ROOM
- 6a. FRENCH MARKET PARLOR

MEZZANINE B

7. IBERVILLE ROOM
8. BIENVILLE ROOM
9. LA NOUVELLE ORLEANS WEST
10. LA NOUVELLE ORLEANS EAST

LOBBY/GROUND FLOOR

1. ROYAL BALLROOM
2. LOBBY
3. CAROUSEL PIANO BAR & LOUNGE
4. HUNT ROOM GRILL
5. LE CAFE RESTAURANT
6. LOGO GIFT SHOP



CONVENTION FACILITIES

24,000 square feet of meeting space | 24 ballroom, meeting and reception rooms | Largest at 6,236 square feet accommodating up to 500

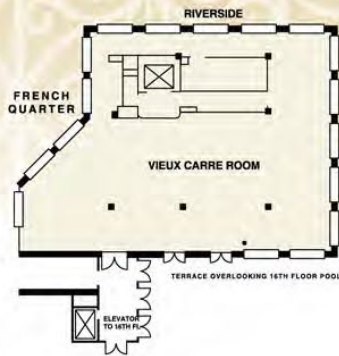


Hotel Monteleone

*Contact our sales team
to plan your event!*

504-523-3341 800-535-9595

FAX 504-681-4491



CONVENTION FACILITIES

24,000 square feet of meeting space | 24 ballroom, meeting and reception rooms | Largest at 6,236 square feet accommodating up to 500

Join us next year

Biodiversity Without Boundaries 2015

Traverse City, Michigan

April 19-23

