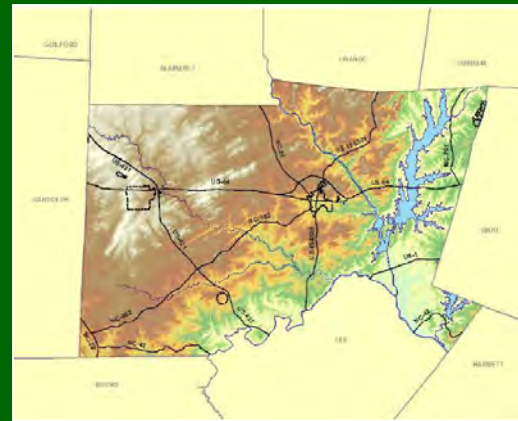
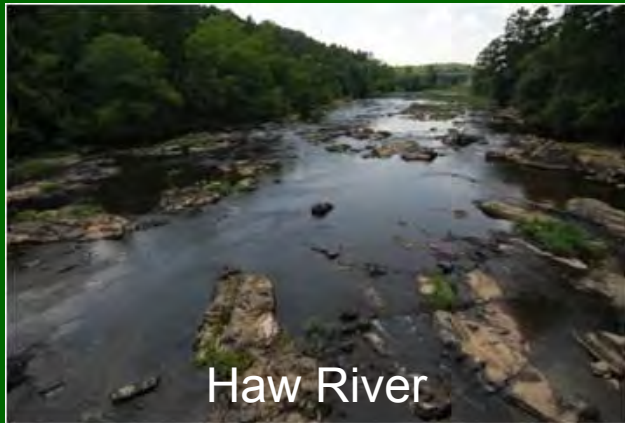


Chatham Conservation Partnership:

A Model for Planning, Action & Implementation at the Local Level



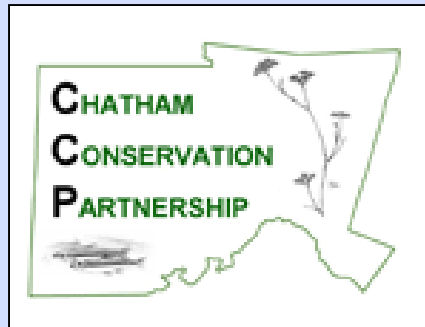
Southeastern Biodiversity Conservation Forum

Allison Schwarz Weakley

March 7, 2018

Chatham Conservation Partnership (CCP)

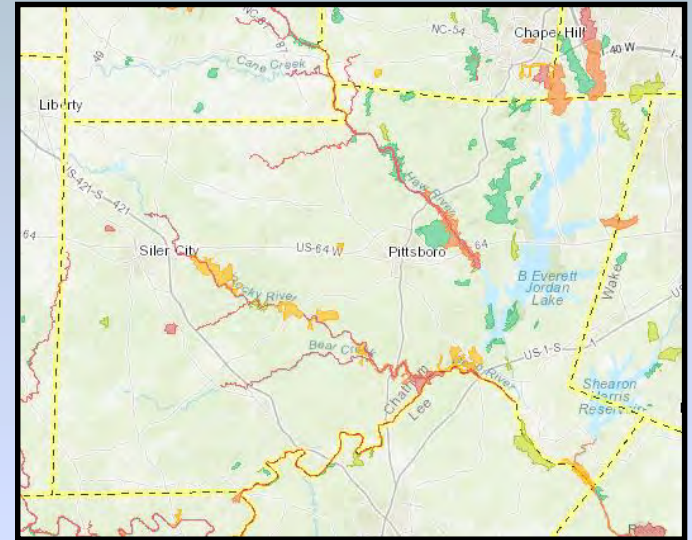
Mission: to develop and implement strategies for a community conservation vision that builds awareness, protection and stewardship of Chatham County's natural resources.



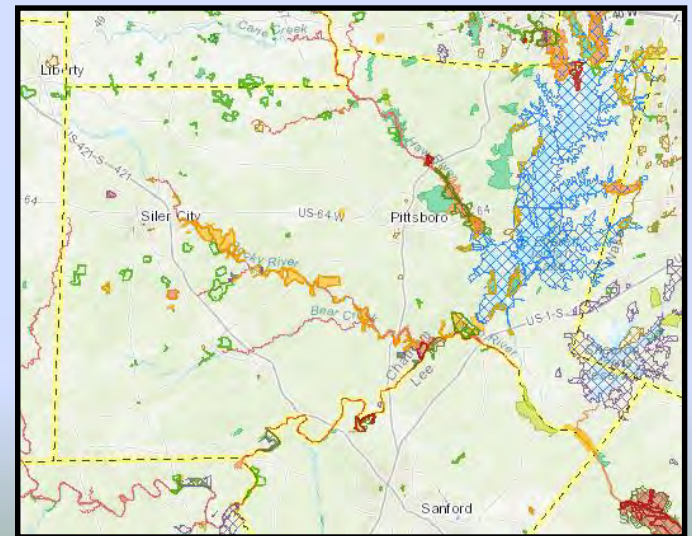
The CCP is a collaboration of local, state and federal government agencies, non-profit organizations, businesses, individuals and others who work together on natural resource conservation programs and issues in Chatham County, North Carolina.

Chatham County, NC

- 52 Natural Areas*
- 124 Elements of Biodiversity*
 - 31 Natural Communities
 - 40 Plants
 - 52 Animals
 - 1 Animal Assemblage
- Managed Areas* – land trust efforts, state and federal investments



NCNHP Natural Areas



NCNHP Managed Areas

*NCNHP Statistics (2018)

In the beginning (2007)...

Natural Resource Planning in Chatham County



*Photo of Haw River
by Elaine Chlosso*

Kristen Sinclair
NC Natural Heritage Program

Allison Weakley
Consulting Biologist

August 2007

Why should Natural Resource Planning
be a Priority for Chatham County?

- Recreation and open space
- Water quality
- Wildlife habitat
- Economic development
- Quality of life



To protect our heritage and ensure that our future is bright!



Original CCP Steering Committee:

Sarah McRae (USFWS)

John Ann Shearer (USFWS)

Tandy Jones (Triangle Land Conservancy)

Quarterly Meetings and Field Trips

- Meeting Topics

- Wildlife
- Rare Species
- Water Resources
- Transportation Planning
- Land Use & Natural Resource Planning
- Agriculture
- Sustainable Forestry
- Climate Change

- Field Trips

- Mussels/Fish
- Bats
- Salamanders and frogs
- Crayfish
- Pollinators
- Birds
- Native/Invasive Plants
- Farmland
- Forestry

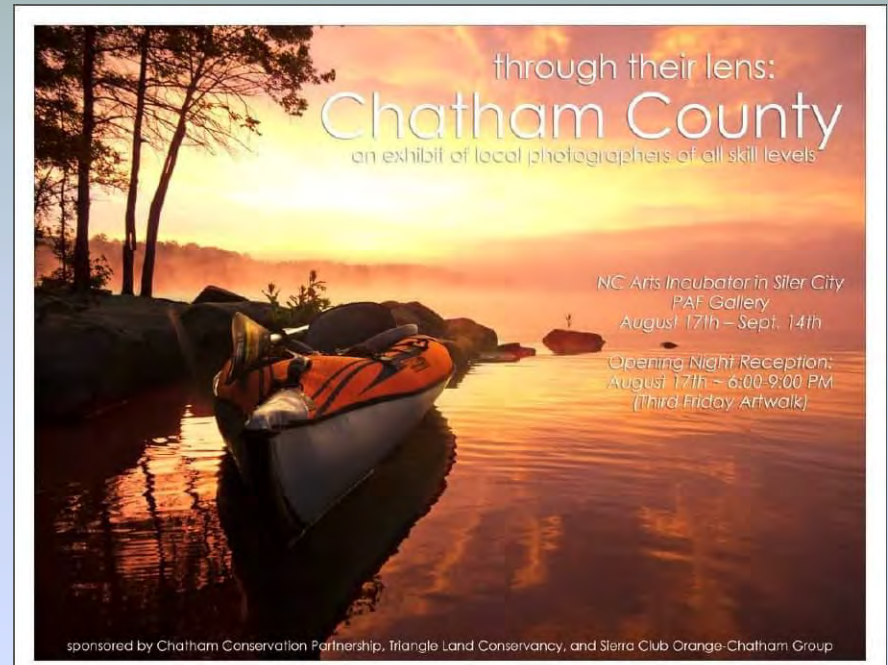


Meetings and Field Trips



Public Outreach and Education

- Nature photography contest and workshop
- Outings co-sponsored with Central Carolina Community College (CCCC)
- UNC Environmental Studies student projects
- Land Conservation symposium
- Earth Day celebration

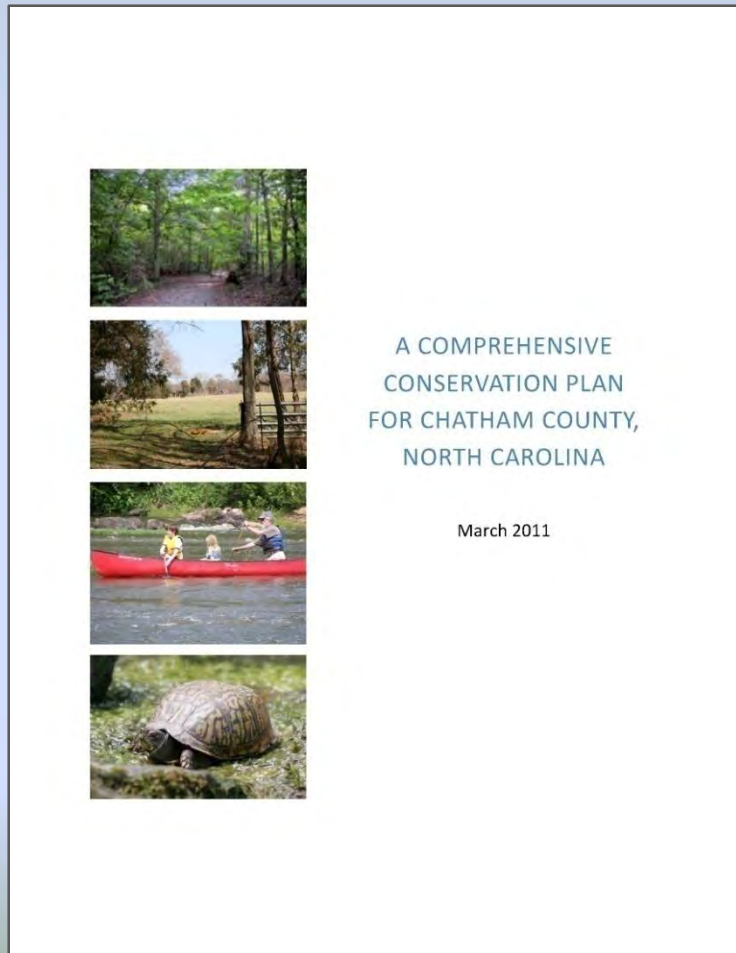


Conservation Planning Projects

- The Southwest Shore Conservation Assessment (2008)
- A Comprehensive Conservation Plan for Chatham County (2011)
 - Planning Tools for Pittsboro (2015)
- Water Resource Planning for Siler City (2016)
- Chatham County Comprehensive Plan (2017)



A Comprehensive Conservation Plan for Chatham County



- First countywide conservation plan in the state
- Completed in 2011
- Collaborative effort of many partners and community members
- Available for download on the CCP wikispace

Funding for the Conservation Plan

- **Z. Smith Reynolds Foundation**
- **NC Wildlife Action Grant Program**
- **NC Urban and Community Forestry Grant Program**



*Grants were administered by the
Triangle Land Conservancy (TLC) and
Piedmont Conservation Council (PCC)*

*plus in-kind services from local, state, and federal agencies, and others

Goals of the Conservation Plan

- A community vision for natural resources
- A greater understanding and awareness of the importance and location of natural resources
- An understanding of the economic importance of forest resources for timber, recreation and water quality
- An increased knowledge of the impacts and threats to important natural resources
- Preferred strategies to manage and protect important natural resources



Purpose and Need

- Information on important resources aids in decision-making, planning, and project review, and can support funding opportunities
- The best available, most current GIS data are readily available for use in an online mapping tool and can be downloaded
- Education and outreach is needed – including for the general public, staff, elected officials and landowners



Building on State and Regional Conservation Planning Efforts

- NC Conservation Planning Tool
- NC State Wildlife Action Plan
- NC Forest Action Plan
- Southern Forest Land Assessment

The Chatham Conservation Plan considers data layers and methods used in these existing tools, and provides updates, additions and other modifications for application of these tools at the local level.



Project Overview

- Conservation Plan
- Conservation Analysis and Mapping
- Environmental Resource GIS Data – available on Chatham County GIS Mapping website or FTP site for download
- Stakeholder Involvement

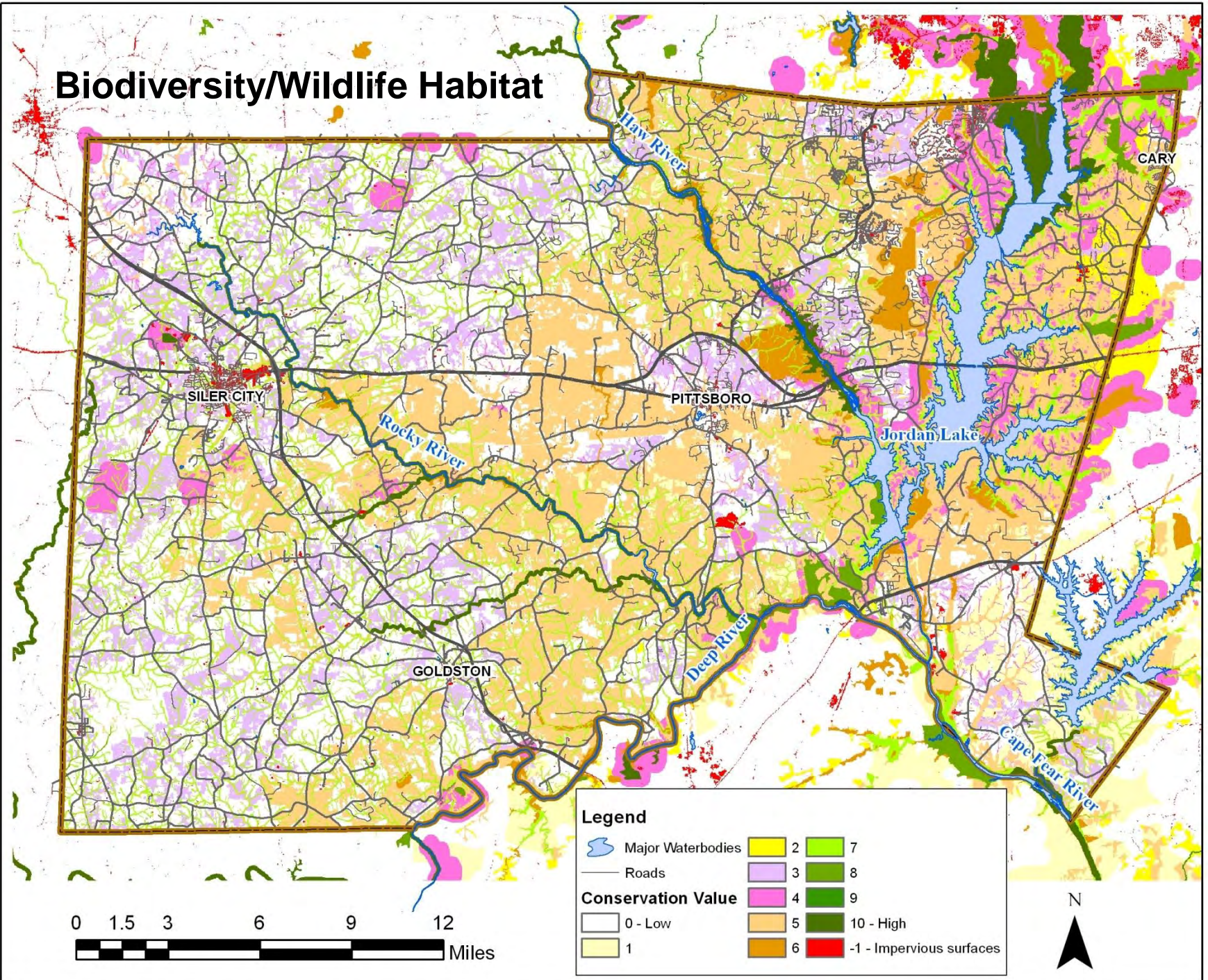


Chatham County's Public Resources

- **Biodiversity/Wildlife Habitat**
 - Plant and Animal Species
 - Natural Plant Communities
 - Significant Natural Heritage Areas
 - Wildlife Habitat
- **Working Lands**
 - Forestland
 - Farmland
- **Water Resources**
- **Recreation**

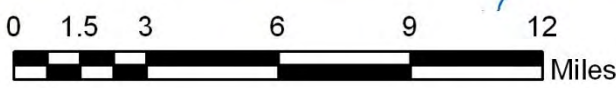


Biodiversity/Wildlife Habitat



Legend

Major Waterbodies	2	7
Roads	3	8
Conservation Value	4	9
0 - Low	5	10 - High
1	6	-1 - Impervious surfaces

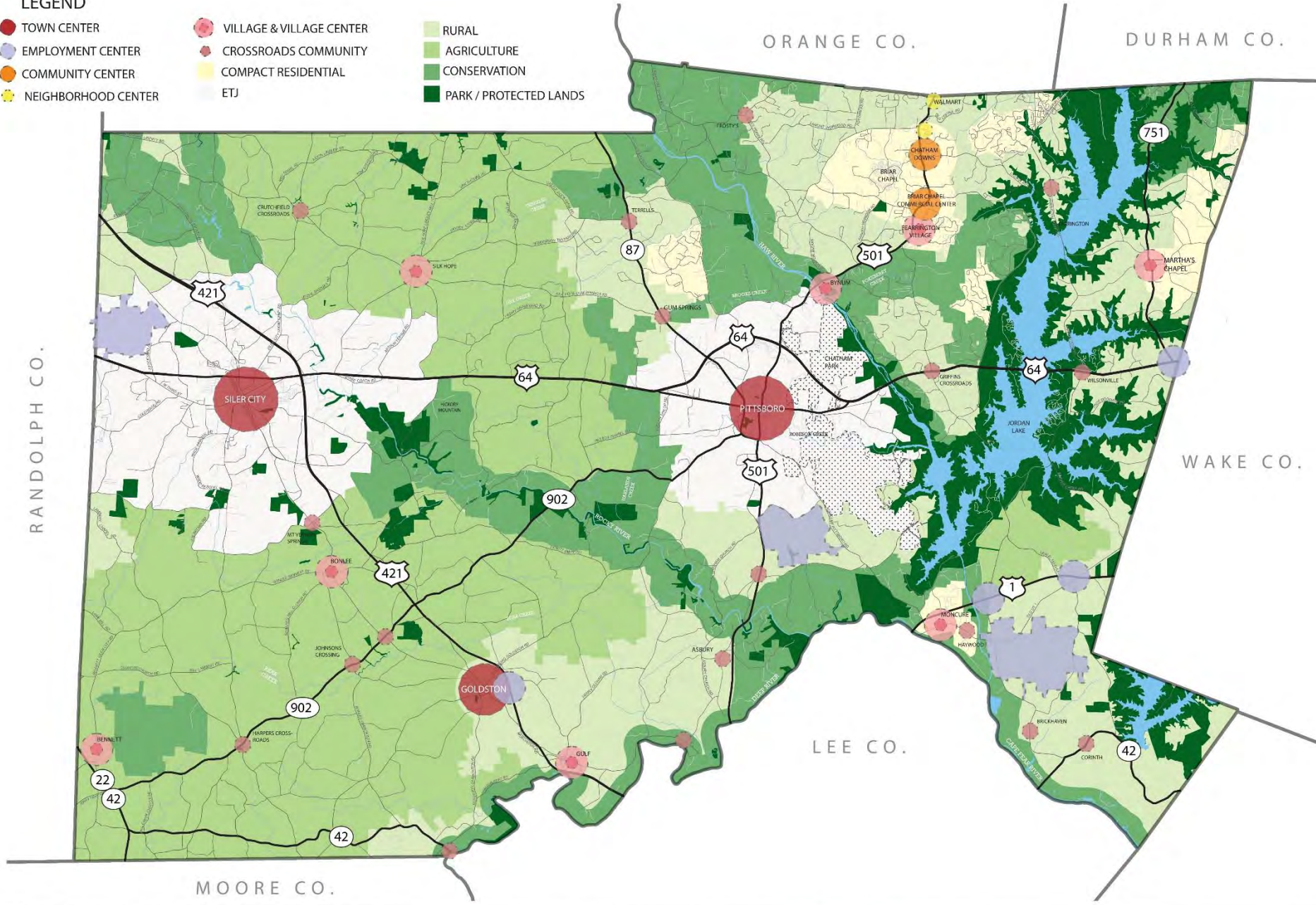


Chatham County Conservation Plans, Policies, and Ordinances

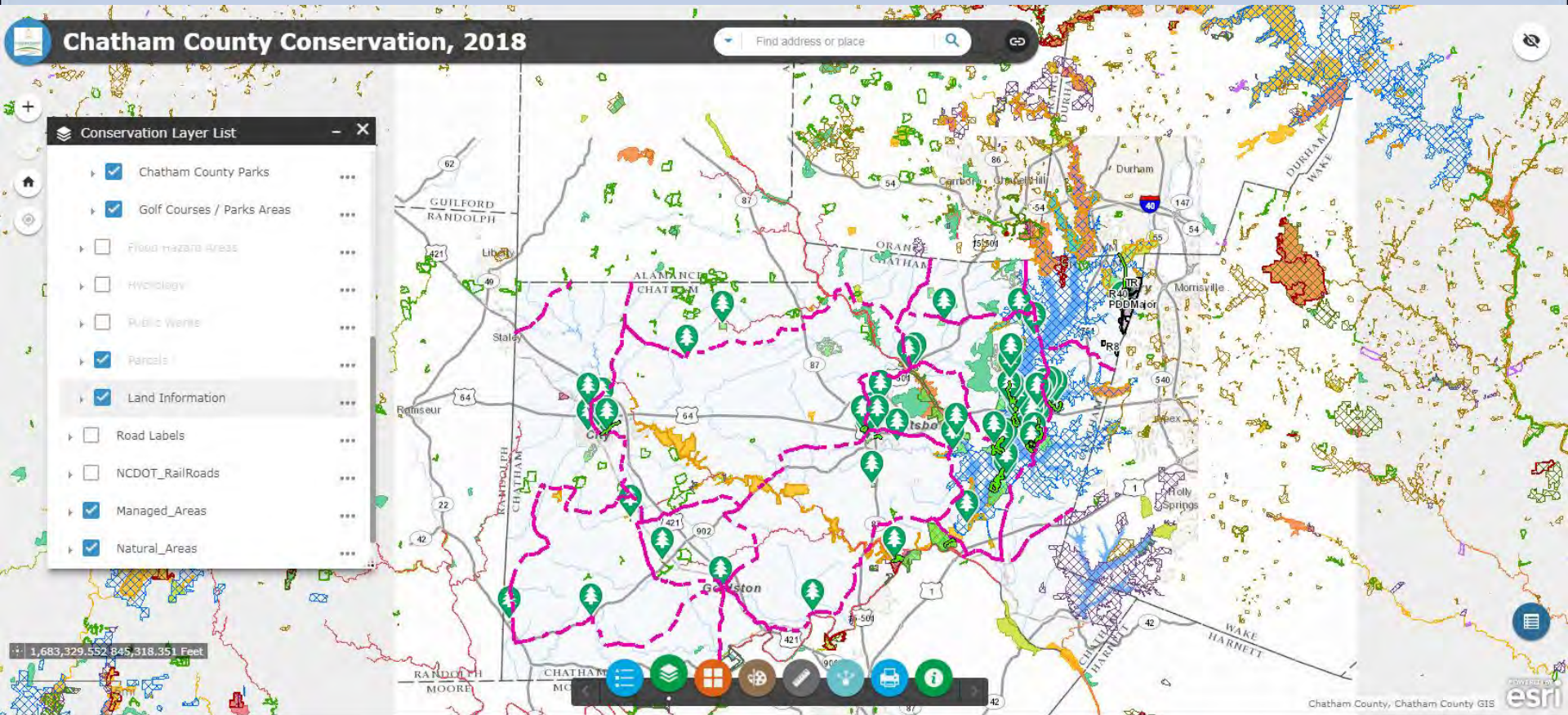
- **Subdivision Ordinance (2008)**
 - Conservation Subdivision Guidelines (2008)
 - Environmental Documentation/ Environmental Assessment Requirements (2008)
- **Comprehensive Plan (2017)**
 - Future Land Use and Conservation Map
 - Parks, Recreation and Open Space Map
 - **Natural Resources and Resiliency Chapters and Recommendations**
 - Big Woods Conservation Design Guide

LEGEND

- TOWN CENTER
- EMPLOYMENT CENTER
- COMMUNITY CENTER
- NEIGHBORHOOD CENTER
- VILLAGE & VILLAGE CENTER
- CROSSROADS COMMUNITY
- COMPACT RESIDENTIAL
- ETJ
- RURAL
- AGRICULTURE
- CONSERVATION
- PARK / PROTECTED LANDS



Conservation Map Viewer *(under development)*



How do I access the Conservation Plan and GIS data?

- CCP Wikispace

<http://chathamconservation.wikispaces.com>

- Chatham County GIS

<http://www.chathamgis.com/>



To join the CCP listserve, please contact
Debbie Roos at debbie.roos@chathamnc.org

Thank you! Questions?

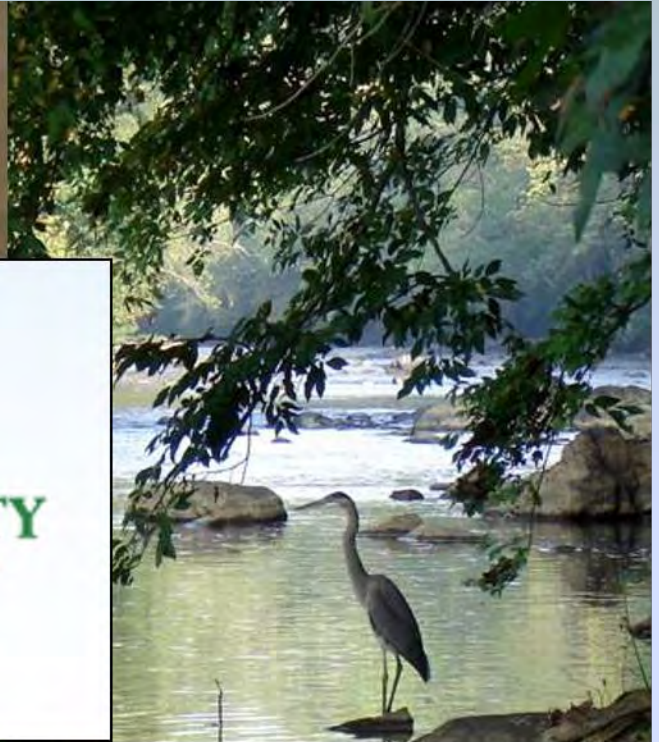


Photo Credits

- CCP Nature Photo Contest Winners – 2009
- Allison Weakley, NC Natural Heritage Program
- Elaine Chiosso, Haw River Assembly
- Gerald Pottern, RJG&A
- NC Soil and Water Conservation
- NC Wildlife Resources Commission
- Triangle Land Conservancy
- Mark Megalos, NCSU