

# Spatial Data Management Without Boundaries

Dave Smetana

Conservation Data Node Manager,  
Worldwide Office



# Today

- Central Science at The Nature Conservancy and the Conservation Data and Information Systems Unit
- Conservation Data Node Network and the Core Conservation Datasets
- Enterprise Spatial Data Management at 1:100,000,000 Scale

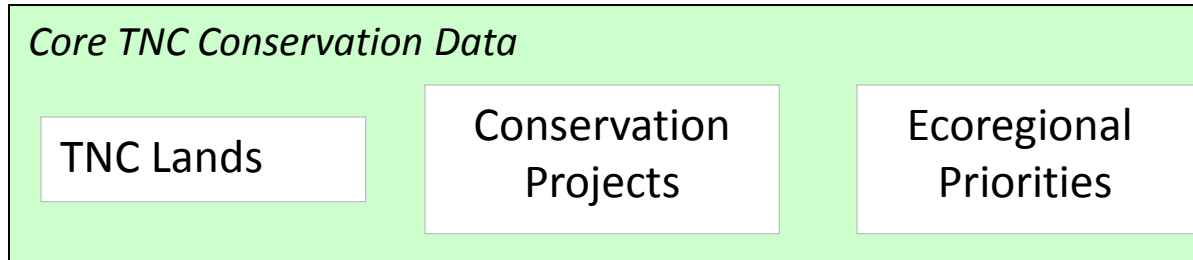
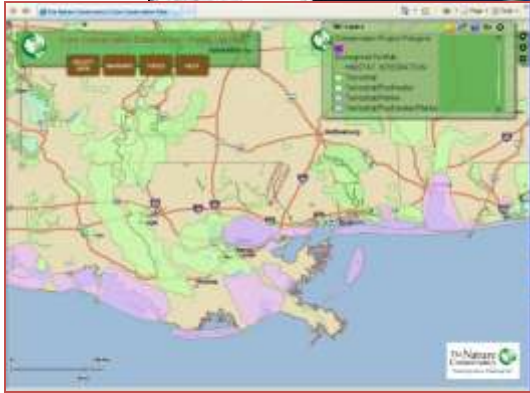
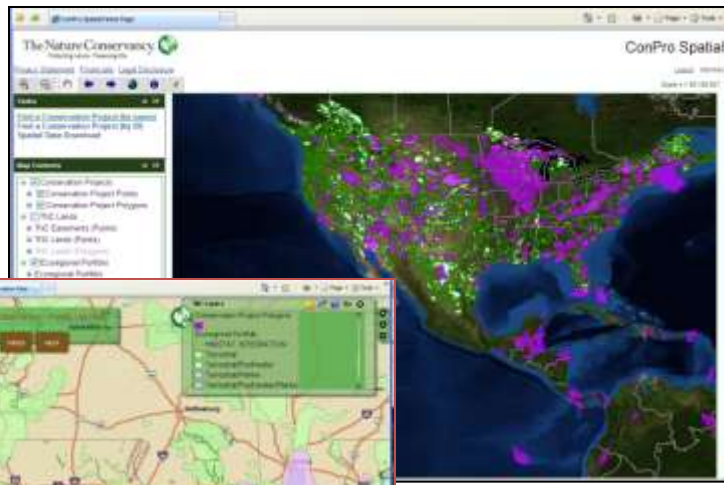
# Central Science

Below are our four major goals for next fiscal year:

- Update and evolve TNC's core planning methods (i.e., Conservation by Design) to include recent innovations – specifically *climate adaptation, return on investment, and social/human dimensions including ecosystem services*.
- Continue to move the organization to reach critical mass on measures (including support to priority projects and strategies).
- Significantly improve conservation project information & delivery (e.g., ConPro), launch a new Conservation Gateway, and address open data sharing within and outside of TNC.
- Perform strategic analyses/research on conservation and poverty, agriculture, and perhaps one additional topic TBD.

# CDIS Unit

- Conservation Data and Information Systems  
<http://maps.tnc.org>
- Coordinate the development and implementation of the core conservation datasets.
- Facilitate use of TNC's Spatial Data Infrastructure for Management and Publishing by providing access, training and support.



plus



TNC Conservation Data Node Network  
(people, hardware, software, methods, standards)

# Conservation Info Systems Strategy

- Completed in 2006
- Identified Core Conservation Datasets The Nature Conservancy Should Maintain
- Identified Technology, People and Know-How Necessary to Create and Maintain Core Conservation Datasets using the Conservation Data Node Network

# Core Conservation Datasets

- Portfolio of Priorities from Ecoregional Assessments (Terrestrial, Freshwater and Marine ERAs)
- Conservation Projects
- TNC Lands

### Core Conservation Data Viewer - Public Version

Current Action: Pan

**SELECT DATA** **NAVIGATE** **TOOLS** **HELP**

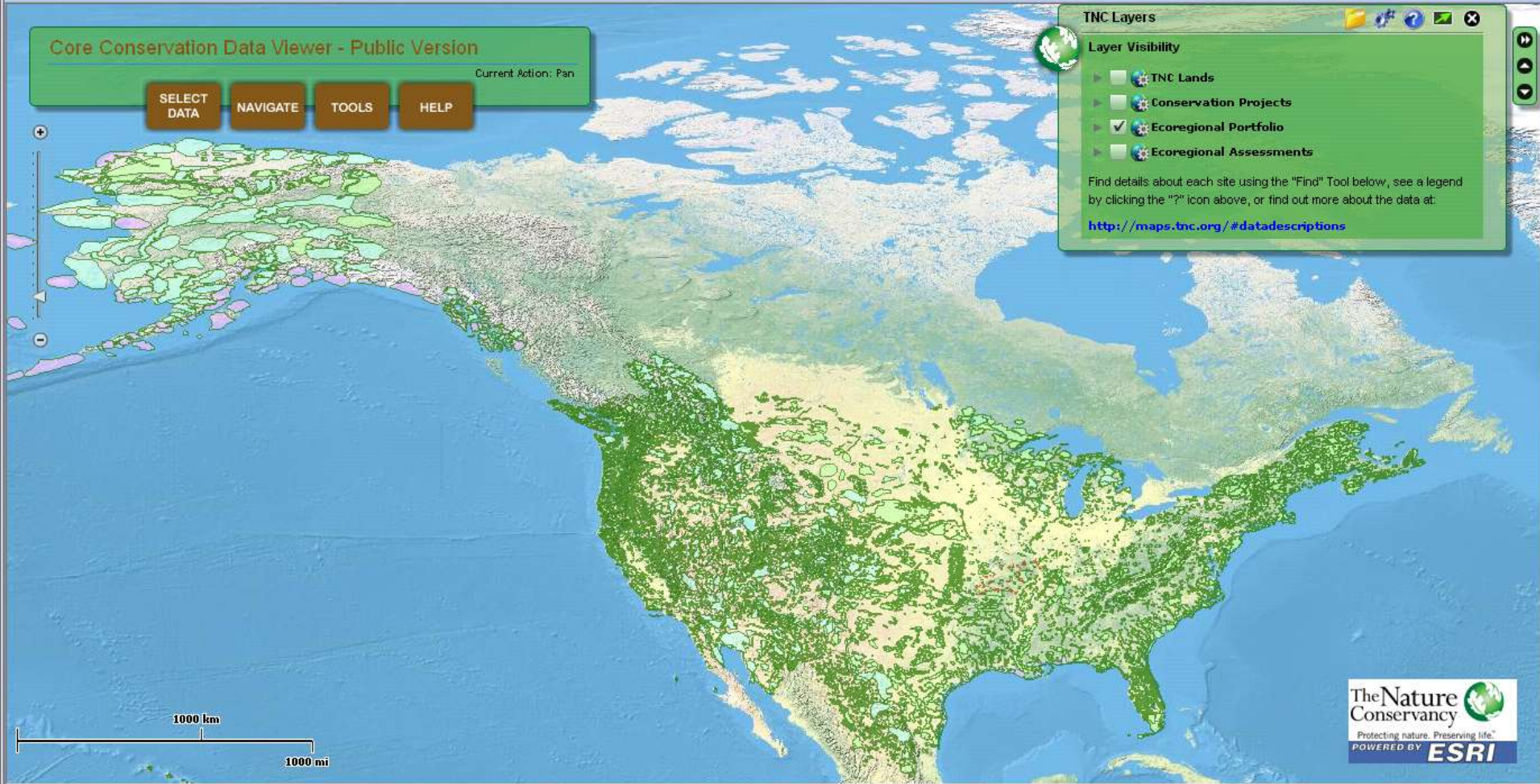
#### TNC Layers

Layer Visibility

- TNC Lands
- Conservation Projects
- Ecoregional Portfolio
- Ecoregional Assessments

Find details about each site using the "Find" Tool below, see a legend by clicking the "?" icon above, or find out more about the data at:

<http://maps.tnc.org/#datadescriptions>



### Core Conservation Data Viewer - Public Version

Current Action: Move Map

SELECT DATA

NAVIGATE

TOOLS

HELP

#### TNC Layers

##### Layer Visibility

- TNC Lands
- Conservation Projects
- Ecoregional Portfolio
- Ecoregional Assessments

Find details about each site using the "Find" Tool below, see a legend by clicking the "?" icon above, or find out more about the data at:

<http://maps.tnc.org/#datadescriptions>

4000 km

2000 mi



## Search ConPro

Know what you are looking for?

[advanced search](#)



SEARCH

OR Select from a list of projects:

Select Project:

OR Enter name of project:

# Welcome to CONPRO

**What is ConPro?** ConPro is a searchable repository of over 1000 conservation projects of The Nature Conservancy and our partners. Learn details like the ecological targets being conserved, threats to these targets, strategies being implemented, and what indicator measurements are showing about progress towards achieving the project objectives. [Read more...](#)

© Chris Helzer/The Nature Conservancy

## What's New



### Take ConPro Projects with You Anywhere!

You can now export any ConPro project as a PDF for printing or download to your desktop. This makes project info more portable than ever.

[LEARN MORE >](#)

## Browse the Map Interface

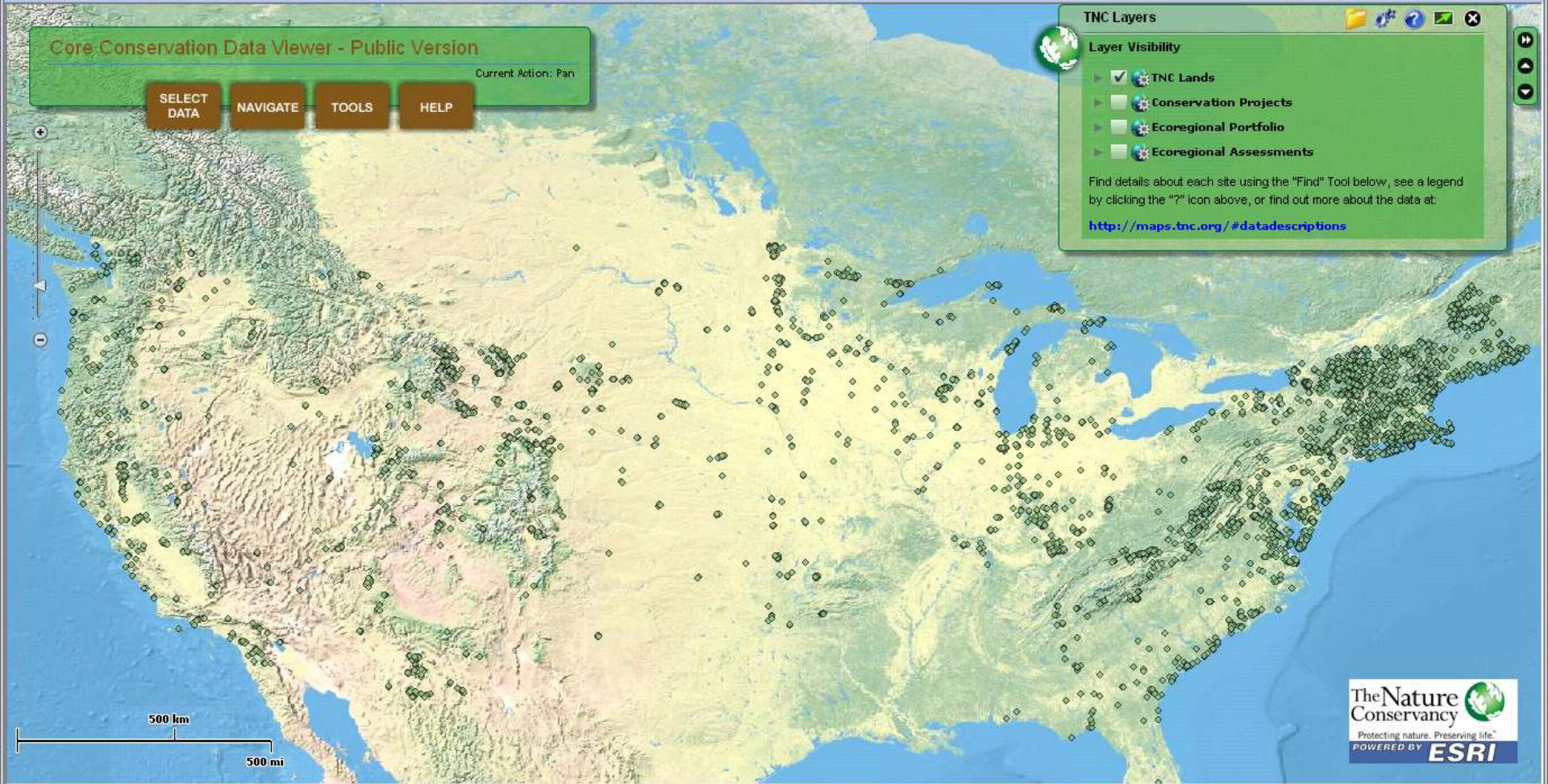


[LEARN MORE >](#)

## Featured Projects

### Northern Kenya Rangelands

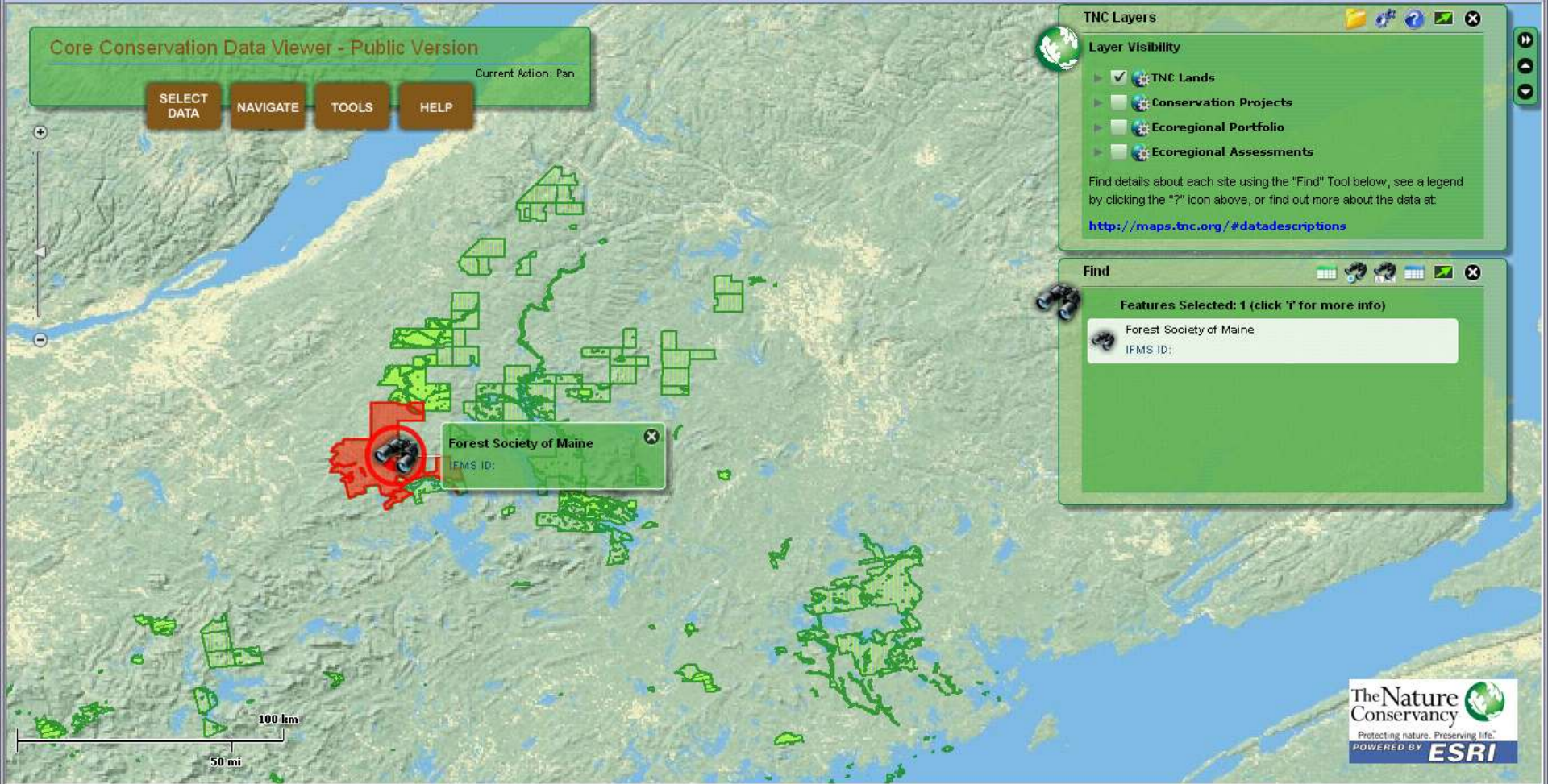
The Northern Kenya Rangelands project covers a vast unbroken landscape, roughly the size of California, in northern Kenya. It is a mosaic of conserved and connected private, communal and public lands that protect unique habitats, wildlife, traditional grazing practices and fresh water across latitudinal and elevation gradients. The objective of the project is to sustain pastoral communities through wildlife conservation while helping to increase resiliency to climate change. The ConPro record includes a Miradi file, a summary report, and a detailed map.



### Core Conservation Data Viewer - Public Version

Current Action: Pan

**SELECT DATA** **NAVIGATE** **TOOLS** **HELP**



#### TNC Layers

Layer Visibility

- TNC Lands
- Conservation Projects
- Ecoregional Portfolio
- Ecoregional Assessments

Find details about each site using the "Find" Tool below, see a legend by clicking the "?" icon above, or find out more about the data at:  
<http://maps.tnc.org/#datadescriptions>

#### Find

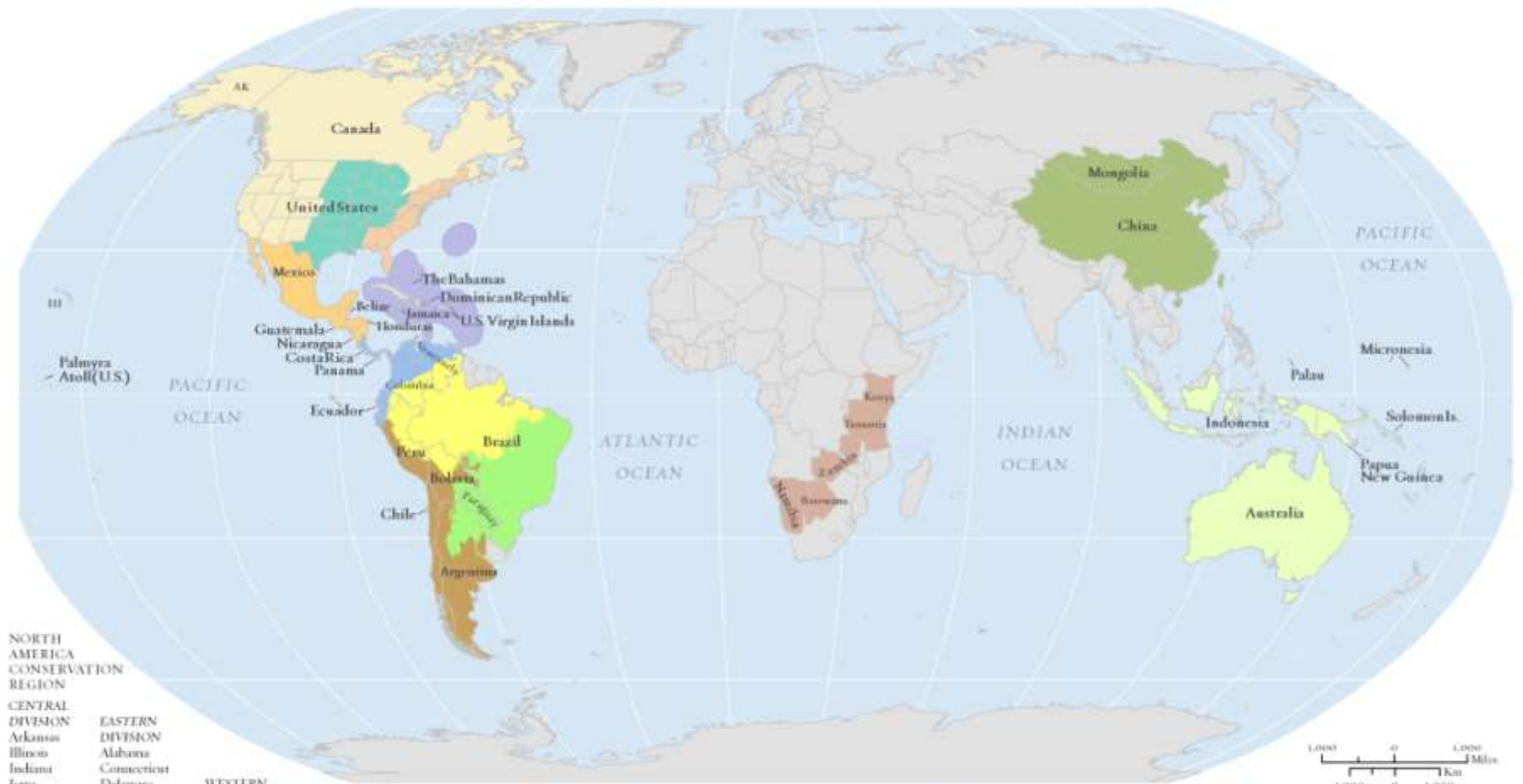
Features Selected: 1 (click 'I' for more info)

- Forest Society of Maine  
IFMS ID:



# THE NATURE CONSERVANCY - WHERE WE WORK

## Conservation Regions and Programs



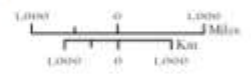
**NORTH AMERICA CONSERVATION REGION**

- CENTRAL DIVISION**  
 Arkansas  
 Illinois  
 Indiana  
 Iowa  
 Kansas  
 Kentucky  
 Louisiana  
 Michigan  
 Minnesota  
 Missouri  
 Mississippi  
 Nebraska  
 North Dakota  
 Ohio  
 Oklahoma  
 South Dakota  
 Tennessee  
 Texas  
 Wisconsin
- EASTERN DIVISION**  
 Alabama  
 Connecticut  
 Delaware  
 Florida  
 Georgia  
 Maine  
 Maryland  
 Massachusetts  
 New Hampshire  
 New Jersey  
 New York  
 North Carolina  
 Pennsylvania  
 Rhode Island  
 South Carolina  
 Vermont  
 Virginia  
 West Virginia
- WESTERN DIVISION**  
 Alaska  
 Arizona  
 California  
 Canada  
 Colorado  
 Hawaii  
 Idaho  
 Montana  
 Nevada  
 New Mexico  
 Oregon  
 Palmyra Atoll  
 Utah  
 Washington

- North America Conservation Region Divisions**
- Eastern
  - Central
  - Western
  - Caribbean Operating Unit

- Latin America Conservation Region Conservation Programs**
- Mexico and Northern Central America
  - Amazon
  - Atlantic Forest and Central Savannas
  - Northern Andes and Southern Central America
  - Southern Andes

- Asia Pacific Conservation Region
- North Asia Conservation Region
- Africa Program



"Countries Where We Work" are those approved by the Conservancy's President, Board of Directors, or Executive Team where The Nature Conservancy is committed to being deeply engaged, directly and through partners, in complex on-the-ground conservation projects.

# Overcoming Boundaries

- Use a Standardized Technology Module that Distributes Resources and Access
- Define Responsibilities, Communicate Often
- Develop Data Models Iteratively and Collaboratively, with Leadership
- Release Products Early and Often to Demonstrate Value, Gain Feedback, Maintain Interest and Relevance in a Changing Org
- Focus on Serving Business and Team Needs

# Final Thoughts

- Stop, Collaborate and Listen
- Gain Senior Level Support and Leadership
- Show Off Your Work with Products and Access
- Diversity Uses of Your Data, and Serve Many

# Questions?

Thank you!

Dave Smetana

[dsmetana@tnc.org](mailto:dsmetana@tnc.org)

(703) 841-5346

[maps.tnc.org](http://maps.tnc.org)