

BIODIVERSITY 20 WITHOUT 13 BOUNDARIES

The NatureServe Conservation & Natural Heritage Conference

April 14–18 ~ Baltimore, Maryland



A Special Thanks to Our Co-Host!



Biodiversity Without Boundaries 2012 is co-hosted by the **Maryland Natural Heritage Program**, part of the Maryland DNR's Wildlife and Heritage Service. Active involvement by our network members programs—both at the conference and throughout the planning stages—is crucial to making BWB a can't-miss event.

Our most sincere thanks and appreciation go out to **Paula Becker, Jonathan McKnight**, and their colleagues and volunteers from the **Maryland Natural Heritage Program**! Learn more about them at http://dnr.maryland.gov/wildlife/plants__wildlife/nhpintro.asp

THANK YOU!



2

Our Mission

To provide the scientific basis for effective conservation action.

NatureServe and its network members collect and maintain a unique body of scientific information about the species and ecosystems of the Western Hemisphere. Our scientists, technologists, and other professionals build on this knowledge by providing information, tools, and biodiversity expertise for local, national, and global conservation needs.

NatureServe • 4600 N. Fairfax Drive, 7th Floor • Arlington, VA 22203 • 703-908-1801 • www.natureserve.org

Acknowledgments

Thanks to all our featured speakers and presenters for your generosity in sharing your time and knowledge.

Thank you to the NatureServe staff who provided the principal planning, organization, and staffing for BWB2013: Erin Chen, Kyle Copas, Maria Clara de Araujo, Ana Luisa Gallardo, Michael Jewell, Don Kent, Pat Leighty, Elizabeth (and Eleanor Mae) Primus, Alexandra Sanchez, Ravi Shankar, Sam Sheline, and Danielle Sundstrom.

Cover photo: Marsh, Hoopers Island, Maryland, by Chesapeake Bay Program, 2009. Creative Commons BY-NC
<http://www.flickr.com/photos/29388462@N06/5058109666/>

Welcome to Biodiversity Without Boundaries 2013!

Biodiversity Without Boundaries focuses on the crucial role of scientific knowledge, tools, and leadership in effective biodiversity conservation. Designed to bring together partners from across all sectors, BWB explores issues, challenges, and solutions transcend physical, political, jurisdictional, and ecological boundaries.

This year, as we convene in the heart of the Chesapeake Bay, the conference focuses on topics that relevant to the watershed and beyond, like **Large Landscape Conservation**, **Climate Change**, and **Citizen Science**. Each of these tracks complements our perpetual interests in **Science**, **Tools & Technology**, and **Networking & Collaboration**.

We are excited that each of you have chosen to join us, as our efforts can succeed only through broad collaborations—ones capable of achieving conservation across boundaries and at scales much bigger than any of us can accomplish alone. Conference participants represent a wide range of disciplines and organizations from across the Hemisphere, but we share one thing in common: a firm commitment to effective science-based conservation.

Thank you for joining us!

Featured Speakers

Dan Ashe

Keynote Speaker, Wednesday, April 17

Daniel M. Ashe was confirmed on June 30, 2011 as the 16th Director of the U.S. Fish and Wildlife Service, and his appointment by President Obama is the culmination of a lifetime spent within the nation's principal Federal agency dedicated to the conservation of fish and wildlife and their habitats. Much of Ashe's childhood was spent on national wildlife refuges and fish hatcheries in the Southeast, where he learned to band birds, fish, hunt and, most importantly, simply enjoy the outdoors. Prior to his appointment as Director, Ashe served as the Service's Deputy Director for Policy, the Science Advisor to the Director, Chief of the National Wildlife Refuge System, and Assistant Director for External Affairs.



Mary Klein

Welcome and Opening Remarks, Monday, April 15

Mary Klein has been the president and CEO of NatureServe since 2005. Prior to joining NatureServe as vice president of network operations in 2000, she was director of the Colorado Natural Heritage Program and served as chair of the board of the Association for Biodiversity Information, NatureServe's predecessor organization. Mary began her career with The Nature Conservancy and has more than 20 years' experience in the field of conservation, including regional program development in the western United States, Canada, and Latin America.



2013 NatureServe Member Awards

Conference Dinner—Monday, April 15

NatureServe began recognizing outstanding achievements by network members during our international conservation conference in 2003 in an effort to promote and motivate activities that enhance the network that is the foundation of our organization.

This year we will present three awards for **Conservation Impact, Scientific or Technological Achievement, and Network Collaboration or Mentoring**. These awards honor our members' contributions to effective conservation, benefit them by enhancing their local standing and reputation, and recognize achievements regardless of the organizations' size and capacity.

Awards will be presented at the 2013 Biodiversity without Boundaries Conference, and we strongly encourage NatureServe and network staff attend. Award recipients will receive a pair of plaques to display in their offices and those of their top-level management along with a letter of recognition copied to their managing agency director.

2012 Award Winners

Florida Natural Areas Inventory

SalvaNATURA

Washington Natural Heritage Program

2013 NatureServe Conservation Award

Conference Dinner—Tuesday, April 16

The NatureServe Conservation Award recognizes the achievements of a key individual or organization who, through their actions or example, has advanced public understanding and appreciation of biodiversity conservation, and thus helped to advance NatureServe's mission. Honorees have significantly raised the public profile of the importance of biodiversity conservation, exhibited innovation and creativity in their approach and impact, and demonstrated leadership in advancing science-based conservation. They instill in others a respect for scientific information and provide inspiration to take action toward conserving biodiversity.

Previous Winners

2012 William D. Ruckelshaus

2011 Dr. Edward O. Wilson

2010 Dr. Robert E. Jenkins



2013 Honoree: Walt Reid

We are honored to present Dr. Walt Reid with the 2013 NatureServe Conservation Award in recognition of his extraordinary and ongoing contributions to the protection and understanding of the world's ecosystems. Dr. Reid is the Director of the Conservation and Science Program at the David and Lucile Packard Foundation. Prior to joining the Institute for the Environment at Stanford University as consulting professor from 2005-2006, he was responsible for the creation of the Millennium Ecosystem Assessment, which he directed from 1998 to 2005.

A remarkable initiative that provided a state-of-the-art scientific appraisal of global ecosystem trends and condition, the consequences of ecosystem change, and the options for policy and management responses, the Assessment transformed how we view and value natural resources while redefining how people and institutions establish targets, design strategies, and measure results for conserving important places.

Agenda

Notes

Session abstracts are provided in your registration packet, listed alphabetically by lead presenter. Abstracts include contact information and co-authors.

Half-hour breaks with complimentary service occur each day in the morning and afternoon. Group lunches will be held in the Marble Room, 1st Floor.

Field Trips – Sunday, April 14

All field trips include transportation and depart from the conference hotel. Please gather in the lobby 15 minutes prior to departure time.

9:00a--5:00p	Paddling Parkers Creek (\$40/person, lunch included)
	Blackwater National Wildlife Refuge Tour (\$40/person, lunch included)
9:30a-?	National Aquarium in Baltimore (\$40/person, lunch included)
11:00a--5:00p	Botany Hike Along the Potomac Gorge/C&O Canal (\$40/person, lunch included)
1:00p--5:00p	Exploring Soldiers Delight Natural Environment Area (\$27/person)
	Bog Turtling in Central Maryland (\$27/person)
Date & Time TBD	Mid-Week Birding Trip to Fort Smallwood (\$15/person)

Auxiliary Meetings

Sunday, 6:00–9:00p Concordia Room, 3d Fl.	Joint Section Council Meeting Bob Gottfried, Chair. All network members are welcome to observe.
Monday, 10:00–5:00p Concordia Room, 3d Fl.	Modeling Centers Business Meeting
Monday, 5:00–6:00p Concordia Room, 3d Fl.	U.S. Section Coordinator Meeting
Tuesday, 10:30a–5:00p Concordia Room, 3d Fl.	iMapInvasives Business Meeting Meg Wilkinson, New York Natural Heritage Program. By invitation only.

Poster Presentations

*Posters will be displayed in Edinburgh Hall, 5th Floor throughout the conference.
Presenters will be available during the Monday evening networking reception.*

Maryland Amphibian and Reptile Atlas: Technology and Citizen Science Lynn Davidson & Heather Cunningham Maryland DNR	A New Protective Areas Database for Oklahoma Todd Fagin & Bruce Hoagland	Coordinating Distributed Experiments: In Pursuit of Global Science Eric Lund
NatureServe Surveyor Kathleen Maybury & Lori Scott, NatureServe	Rank Calculator - Crowdsourced! Margaret Ormes, NatureServe	iMapInvasives: Sharing Information for Strategic Management Meg Wilkinson, N.Y. Natural Heritage Program

Monday, April 15

	Landscape Conservation Corinthian Room—2nd Floor	Leadership Program Tuscan Room—3rd Floor	Citizen Science Ionic Room—3rd Floor
8:30a–9:30a	Welcome and Opening Remarks—Corinthian Room, 2nd Floor		
10:00a–Noon	The water forest in Mexico: the fate of a forest and metropolitan viability Jürgen Hoth Fundación Biosfera del Anáhuac, A.C.	Introduction (15 min) - Don Kent NatureServe	Are More Regulations the Answer to Conservation Problems? A Case Study of Diamondback Terrapins and Recreational Crab Pots in Maryland Scott Smith, Md. DNR
	Applications of BLM's Rapid Ecoregional Assessments Patrick Crist, NatureServe	Discovery Conversations Shelley Cooke, N.Y. NHP Bob Gottfried , Tex. PWD Greg Podnieszinski, Pa. NHP Nicole Firlotte, Manitoba CDC Dave Anderson Colorado NHP	Taxonomic & Evolutionary Complexity in Amelanchier (Shadbush) in the Potomac Gorge, Maryland and Virginia Christopher Frye, Md. DNR
			Rating Significant Natural Heritage Areas: North Carolina Natural Heritage Program Misty Buchanan, North Carolina NHP
	The shared responsibility of grasslands conservation at a North American scale Jürgen Hoth & Juan Carlos Guzman Fundación Biosfera del Anáhuac, A.C.	Exemplary Leadership Practices: Model Behavior Don Kent, NatureServe	Experimenting with New Strategies for Butterfly Conservation Jennifer Frye & Dana Limpert, Maryland Department of Natural Resources
Noon–1:30p	Lunch—Marble Room, 1st Floor		
1:30–3:00p	Crucial Habitat Assessment Tool (CHAT): A regional approach to developing a decision support system Rick Schneider & Rachel Simpson, Nebraska Game & Parks; Esteban Muldavin, Natural Heritage New Mexico; John Pierce, Washington DFW; Audrey Hatch, WGA; & Pat Comer, NatureServe	Exemplary Leadership Practices Envision the Future Don Kent, NatureServe	The Creation & Sharing of Biodiversity Information: On & Off the Internet Highway Robert Stevenson University of Massachusetts
		Exemplary Leadership Practices: Challenge the Status Quo Don Kent, NatureServe	
3:30–5:00p	Examining the merits of a national conservation support program workshop Mary Klein, NatureServe; Ben Thatcher, USFWS Landscape Conservation Cooperative; & Mark Humpert, Association of Fish and Wildlife Agencies	Exemplary Leadership Practices: Enable Others Don Kent, NatureServe	Workshop: Citizen Science & the NatureServe Network Ends at 5:30p Margaret Ormes, NatureServe
		Exemplary Leadership Practices: Encourage Others Don Kent, NatureServe	
6:00–7:30p	Networking Reception & Poster Presentations—Edinburgh Hall, 5th Floor		

Monday, April 15

Regional Focus	Technology & Tools	Natural Heritage Methodology	
Veterans Room—3rd Floor	Composite Room—3rd Floor	Chapter Room—3rd Floor	
Welcome and Opening Remarks –Corinthian Room, 2nd Floor			8:30a–9:30a
BioFinder: A Prioritization of Vermont’s Natural Landscape Eric Sorenson, Vermont Fish & Wildlife	Websites for Conservation Connectivity Practitioners Mary Harkness & Patrick Crist, NatureServe	Natural Heritage Methodology Training Session starts 7:30a-8:30a NatureServe	10:00a–Noon
Delaware Statewide Vegetation Community Map Robert Coxe, State of Delaware	Reaching for the Sky: Building & Using a Cloud-based Field Data Collection System Tyson Johnston Western Pennsylvania Conservancy		
BioNet & GreenPrint: Tools for Biodiversity Conservation Lynn Davidson, Md. DNR	Using Phylogenetic Knowledge to Improve Conservation Planning: Theory & Tools Joseph Miller Centre for Australian National Biodiversity Research		
Wild & Wonderful West Virginia Wetlands Elizabeth Byers & Jim Vanderhorst, West Virginia DNR			
	Lunch—Marble Room, 1st Floor		Noon–1:30p
Chesapeake Bay Oyster Restoration: The U.S. Army Corps of Engineers Perspective –Past, Present & Future Angie Sowers, Claire O’Neill, Anna Compton, Dave Schulte, Jeff Strahan, & Larry Oliver, USACE	Bridging the Mobile Technology Boundary Douglas Brashear, NavigationArts	Natural Heritage Methodology Training NatureServe	1:30–3:00p
Transitioning from Small to Large-scale Oyster Restoration in Chesapeake Bay, Maryland Angie Sowers & Claire O’Neill, USACE; Eric Weissberger, Md. DNR; Stephanie Westby, NOAA; & Steve Allen, Oyster Recovery Partnership			
Anacostia Restoration Plan Mary Y. Dan, David Robbins, Angie Sowers & Andrew Roach, USACE			
The Evolution of Resilience in Integrated Coastal Systems: Chesapeake Bay Amy M. Guise & Andrew Roach, USACE	Atlas of Rare Butterflies, Skippers, Moths, Dragonflies & Damselflies of Virginia Jason Bulluck & Megan Rollins Virginia Natural Heritage Program		3:30–5:00p
LandScope Chesapeake Lori Scott & Kyle Copas, NatureServe	Maintaining Relevance: The Flora of Virginia project James Ludwig, Va. NHP		
	Blogging as an Outreach Tool David Anderson, Colo. NHP		
Networking Reception & Poster Presentations—Edinburgh Hall, 5th Floor			6:00–7:30p

Tuesday, April 16

	Landscape Conservation	Climate Change	Science & Methodology
	Corinthian Room—2nd Floor	Tuscan Room—3rd Floor	Ionic Room—3rd Floor
8:30–10:00a	USGS/NatureServe Landscape Conservation Symposium INVITED PRESENTATIONS Terrell Jackson, NRCS Seth Mott, USFWS TBD USFWS LCC	Phenological Responses of <i>Platanthera praeclara</i> to Environmental Triggers Nancy Sather & Lori Biederman, Minnesota DNR	Vulnerability Assessment & Adaptation Strategies for Communities Pat Comer, NatureServe
		Tools for Coastal Climate Change Vulnerability Assessment & Planning Sarah Carr & John Rozum, NatureServe	Ask Data Lady, or Rank Calculator Tips and Tricks Margaret Ormes, NatureServe
		Southern Apppalachian Bogs: Ongoing Management & Conservation Efforts in North Carolina Edward Schwartzman, N.C. NHP	
10:30a–Noon	USGS/NatureServe Landscape Conservation Symposium INVITED PRESENTATIONS Gary Machlis, NPS Matthew Andersen, USGS Leslie Honey, NatureServe	Conservation Assessment of Calcareous Habitats & Their Flora in Pennsylvania Jessica McPherson & Steve Grund, Western Pennsylvania Conservancy	Genetic variation in the endangered plant (<i>Ptliminium nodosum</i>): Maryland and West Virginia populations Kimberly Hunter & Whitney Smith, Salisbury University, & Chris Frye & Scott Smith, Md. DNR
		Monitoring High Elevation Wetlands in Pennsylvania Tony Davis & Ephrain Zimmerman, Western Pennsylvania Conservancy	
		Assessing the Potential Effects of Climate Change on Species in the Cumberland Piedmont Network Emily Myron, Chesapeake Conservancy Christopher Bruno, SAIC Laura Mendenhall, USFWS	Workshop: Ecosystem Classification & Mapping: Progress on NVCs & IVC Don Faber-Langendoen & Pat Comer, NatureServe
Noon–1:30p		Lunch—Marble Room, 1st Floor	
1:30–3:00p	USGS/NatureServe Landscape Conservation Symposium Break-out Groups	Invasive Plant Management Decision Analysis Tool Jennifer Dean, N.Y. NHP	Notes from the Field Bruce Young, NatureServe
		Perspective from Programs Incorporating Invasive Species Data DJ Evans, N.Y. NHP Gary Knight, FNAI	
3:30–5:00p	USGS/NatureServe Landscape Conservation Symposium Break-out Groups	The Conservation Leadership Programme Robyn Dalzen, Conservation Leadership Programme	Hydro-Québec & Endangered Species Benoît Vanier, Hydro Quebec
	USGS/NatureServe Landscape Conservation Symposium Synthesis	University-based Heritage Programs: Fostering a Network within the Network John Oetting, FNAI Dave Anderson, Colo. NHP	
7:00–9:00p Conservation Award Dinner—Edinburgh Hall, 5th Floor			

Tuesday, April 16

Regional Focus		Technology & Tools	
Veterans Room—3rd Floor		Composite Room—3rd Floor	
Workshop: Eastern Heritage Community Classification Ephraim Zimmerman, Western Pennsylvania Conservancy	Protected Areas Data: What’s In It for Your Program? Tom Smith, Virginia Natural Heritage Program Allan Cox, Montana Natural Heritage DJ Evans, New York Natural Heritage Program Shara Howie, NatureServe Gary Knight, Florida Natural Areas Inventory		8:30–10:00a
	The New Natural Heritage Data Explorer: Tailoring NatureServe Surveyor to States Jason Bulluck & Rene Hypes, Virginia Natural Heritage Program		
Workshop: Eastern Heritage Community Classification (continued) Ephraim Zimmerman, Western Pennsylvania Conservancy	Latin American Technology Roundtable Rob Solomon, NatureServe		10:30a–Noon
Lunch—Marble Room, 1st Floor			Noon–1:30p
Reviving Tiger Creek: A Success Story Alfredo Alvarez, Pronatura Noreste A.C.	Rare Species Management Planning on Pennsylvania State Game Lands Adam Hnatkovich & Stephanie Seymour Western Pennsylvania Conservancy		1:30–3:00p
Inventory of Orchids & Bromeliads, Jovel Valley, Chiapas, Mexico Patrocinio Alba, Pronatura Sur A.C.	Wikitawa: The Field Guide to Natural Communities in Rock Creek Park Judy Teague, NatureServe		
Geospatial Variables for Monitoring Long-term Ornitofauna Ischel Shesena Hernandez, Pronatura Veracruz A.C.			
From Local Efforts to Regional Impact: Bat Conservation in Latin America Luis Aguirre & Rodrigo Medellin, Centro de Biodiversidad y Genética, Universidad Mayor de San Simon, Bolivia	EO Easy: Using Handhelds to Collect & Transfer the Essentials for Observation Data Jason Bulluck & Kirsten Hazler, Virginia Natural Heritage Program		3:30–5:00p
Field & Online Training for Cloud Forest Restoration: A Tool for Networking Anibal Ramirez, Pronatura Veracruz	Biotics 5 – Mapping Methodology Made Easy! Jennifer Nichols, NatureServe		
The Baird’s tapir as a Tool to Strengthen the Guatemalan Protected Areas System Manolo Garcia, CECON CDC Guatemala			
Conservation Award Dinner—Edinburgh Hall, 5th Floor			7:00–9:00p

Wednesday, April 17

	Landscape Conservation Corinthian Room—2nd Floor	Network Capacity Tuscan Room—3rd Floor	Science & Methodology Ionic Room—3rd Floor
8:30a–9:30a	Keynote Speaker—Corinthian Room, 2nd Floor		
10:00a–Noon	<p>Wildlife Habitat Mapping for land-use Planning & Species Conservation Patrick Woerner, New Jersey Department of Environmental Protection</p> <p>How an Ecosystem Approach to Decision-Making Can Improve Environmental Outcomes Shara Howie, NatureServe</p>	<p>Workshop: The Role of Member Programs in Conservation: Staying Relevant in the 21st Century Moderator: Gary Knight, Florida Natural Areas Inventory</p>	<p>Development & Consolidation of Standards for the Identification of Sites of Biodiversity Significance Christopher Tracey, Pa. NHP Neil Cox, IUCN Jason Bulluck, Va. NHP Dave Anderson, Colo. NHP</p>
Noon–1:30p	Lunch—Marble Room, 1st Floor		
1:30–3:00p	<p>NatureServe Coastal & Marine Strategy Roundtable Workshop Kathleen Goodin, NatureServe</p>	<p>Applying for Funds Erin Chen, Danielle Sundstrom & Ravi Shankar, NatureServe</p> <p>Relationship Building & Cultivation Erin Chen & Danielle Sundstrom, NatureServe</p>	<p>NatureServe Vista: New Features & Applications for Today's Planning Needs Cameron Scott & Patrick Crist, NatureServe</p>
3:30–5:00p	<p>Coastal & Marine Ecological Classification Standard: Workshop Overview & Applications (ends 5:30pm) Kathleen Goodin, NatureServe Mark Anderson, The Nature Conservancy Laura Mattison, Oregon Dept of Land Conservation & Development Mark Finkbeiner, Chris Robinson & David Bruce, NOAA</p>	<p>Relationship Building & Cultivation Erin Chen & Danielle Sundstrom, NatureServe</p> <p>Communication & Marketing Toolkit Kyle Copas, NatureServe</p>	<p>The IUCN Red List of Ecosystems & NatureServe Global At-risk Status Ranks: Advances in Documenting At-risk Status of Ecosystems Pat Comer, NatureServe Charlotte Moser, IUCN</p> <p>Prioritizing Oregon Wetlands for Mitigation & Restoration Jimmy Kagan & Theresa Burcsu Oregon Biodiversity Information Center</p>

Wednesday, April 17

Corporate Voices Veterans Room—3rd Floor		Technology & Tools Composite Room—3rd Floor
Keynote Speaker—Corinthian Room, 2nd Floor		8:30a–9:30a
The Tools Nature Needs Lori Scott, NatureServe	Integrating Natural Heritage and WildlifeTRACS Kathleen Maybury & Lori Scott, NatureServe	10:00a–Noon
Identifying & Evaluating the Potential Conservation Value of Surplus Industrial Properties Laura Napoli & Richard Davi, ExxonMobil		
Corporate Voices Roundtable Hosted by Leslie Honey & Erin Chen, NatureServe	Preparing for Your Biotics 5 Conversion Whitney Weber, NatureServe	
Lunch –Marble Room, 1st Floor		Noon–1:30p
Assessing the Andes-Amazon Basin for Effective Conservation Investment Carmen Josse & Regan Lyons Smyth, NatureServe	Biodiversity Conservation Success Stories on Military Lands Douglas Ripley, NatureServe Board of Directors Jane Mallory, HGL, Inc.	1:30–3:00p
	Biodiversity and the Military: The Status of Biodiversity Conservation on Military Lands Jane Mallory, HGL, Inc. Douglas Ripley, NatureServe Board of Directors	
A Protected Area of the Subxerophytic Enclave, Cauca Valley, Colombia Natalia Gomez & Ivonne Munoz, Corporación Autónoma Regional Del Valle Del Cauca	Mining and Ecosystem Services: Hard Trade-offs in Ecuador Maya Kocian, Earth Economics	
Dams & Deforestation: Mapping Biodiversity Threats in the Andes Regan Lyons Smyth & Carmen Josse, NatureServe	The Natural Value of Thurston County, Washington: A Rapid Ecosystem Service Valuation Lola Flores & Jennifer Harrison-Cox, Earth Economics	3:30–5:00p
Conservation Strategies for the Subxerophytic Sites in the Cauca Valley, Colombia Maria Isabel Salazar & Natalia Gomez, Corporación Autónoma Regional del Valle del Cauca	We Value the Earth: A Workshop on the Ecosystem Valuation Toolkit, a Global ESV Platform Jonathan Kochmer, Earth Economics	
Peruvian Rangers: Angels of Creation Despite Difficulties Antonio Tovar, Centro de Datos para la Conservación del Perú, Universidad Agraria la Molina		

Thursday, April 18

	Thursday, April 18		
	Leadership Program	Science & Methodology	Guiding Decisions in Latin America
	Tuscan Room—3rd Floor	Ionic Room—3rd Floor	Veterans Room—3rd Floor
8:30–10:00a	Leading from the Top: Responsibilities of the CEO Mary Klein, NatureServe	Inventory, Monitoring & Adaptive Management: A Large-scale Example from Florida Gary Knight, Florida Natural Areas Inventory	Urban Protected Areas Management & Climate Change Adaptation: The Case of Las Colinas Alvaro Moises, SalvaNatura
		Downscaling Global Indicators to Catalyze National Biodiversity Xumei Han & Alexandra Sanchez, NatureServe	Cocaine, Cattle & Tropical Deforestation in Rio Platano, Honduras Ophelia Wang & Erik Nielsen Northern Arizona University
	Motivation Don Kent, NatureServe		How Bad Off Are Central American Reptiles? Bruce Young, NatureServe
10:30a–Noon	Decision-makin Don Kent, NatureServe	Workshop: Using Multi-jurisdictional Analyses to Inform Conservation Decisions Jason McNees & Cameron Scott, NatureServe	Tools for the Conservation of Dry Forests in the Cauca Valley, Columbia Maria Isabel Salazar Ramirez & William Vargas Corporación Autónoma Regional del Valle del Cauca
	Innovation Don Kent, NatureServe		Preventing & Combating Forest Fires on the Yucatan Peninsula Gerardo Garcia Contreras Pronatura Península de Yucatán A. C.
	Story-Telling Don Kent, NatureServe		
	Post-Conference Assignment		
Noon		Wrap-up & Farewell Fun	

Thanks to Our Sponsors!

ExxonMobil is proud
to support NatureServe
in its conservation mission.

exxonmobil.com

ExxonMobil

Taking on the world's toughest energy challenges.™

Thanks to Our Sponsors!

HELP PROTECT OUR OCEANS!



FIRST EVER BLUE CARBON CALCULATOR



THE OCEAN FOUNDATION



Created by The Ocean Foundation this blue carbon calculator helps you naturally offset your greenhouse gas emissions in the ocean through the restoration and protection of seagrass!

- Seagrass meadows support tourism, food security, recreational and commercial fishing
- Seagrass meadows help prevent shoreline erosion and offer protection from destructive storms
- Seagrass meadows are homes to several marine animals such as manatees and a food source for animals such as sea turtles
- Seagrass meadows can store up to 83,000 metric tons of carbon per square kilometer compared to forests which store about 30,000 metric tons per square kilometer
- Seagrass meadows are being destroyed at a rapid pace by human activities such as boating and dredging.

Help protect our oceans and seagrass today!

www.seagrassgrow.org • www.oceanfdn.org

PHOTOS – LEFT: Paul Nicklen / National; RIGHT: Brian J. Skerry / National Geographic Stock



WORLD
RESOURCES
INSTITUTE

WRI CONGRATULATES
OUR FRIEND *and* FORMER
COLLEAGUE



WALT REID



as the RECIPIENT *of the*
**2013 NATURESERVE
CONSERVATION
AWARD**

To learn more about WRI, visit WRI.org.



Meridian Institute

Connecting People to Solve Problems

www.merid.org

Thanks to Our Sponsors!



improving **agriculture**
improving **lives**

In the hands of farmers, better seeds can help protect natural resources and promote biodiversity. Our rapidly growing population is putting limited resources – such as land, water and energy – under increased pressure. But with the right tools, farmers can conserve more for future generations.

That's improving agriculture. That's improving lives. And that's what Monsanto is all about.

MONSANTO 

Monsanto and Vine Design® is a registered trademark of Monsanto Technology LLC. ©2013 Monsanto Company.

Learn more at:
IMPROVEAGRICULTURE.COM

15



The Nature Conservancy 
Protecting nature. Preserving life.

Piney Grove Preserve, located in Virginia © Mark Godfrey

Experts predict that within 100 years, natural lands and water resources will become scarce, and the habitats that support all life could be lost forever. Support our mission to protect the future of our natural world.

To make a difference that lasts, join The Nature Conservancy.
nature.org

M	S
W	S

**MULLEN & SONDBERG
WIMBISH & STONE, P.A.**
CERTIFIED PUBLIC ACCOUNTANTS
AND BUSINESS CONSULTANTS

**2553 Housley Road, Suite 200
Annapolis, Maryland 21401**

410-224-4920 Annapolis
410-841-2440 Baltimore
301-970-2524 DC
410-224-4927 Fax

Michele L. Moore, CPA
mmoore@mswspa.com

John G. Wiland, CPA
jwiland@mswspa.com

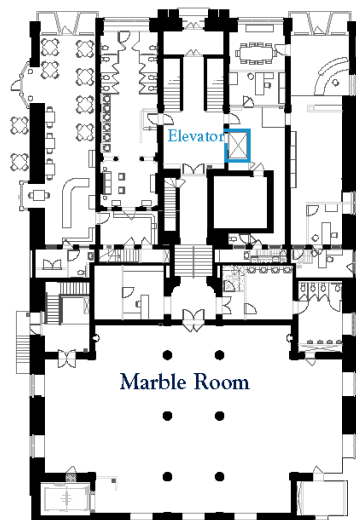
**Keller»Benefit
Services**

About the Conference Venue

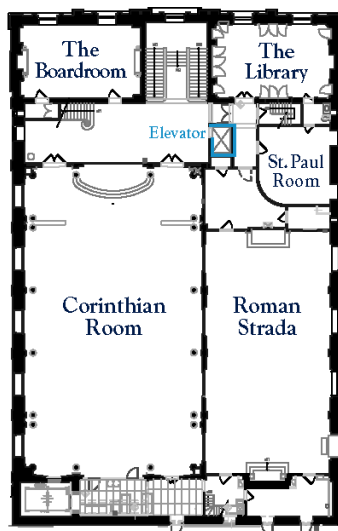
Located in the heart of downtown Baltimore, the **Tremont Suites Hotel & Grand Historic Venue** is a short walk to famous sites like the Inner Harbor, Lexington Market, Oriole Park at Camden Yards.

Learn more about local attractions that await at www.tremontplazahotel.com/neighborhoods.htm.

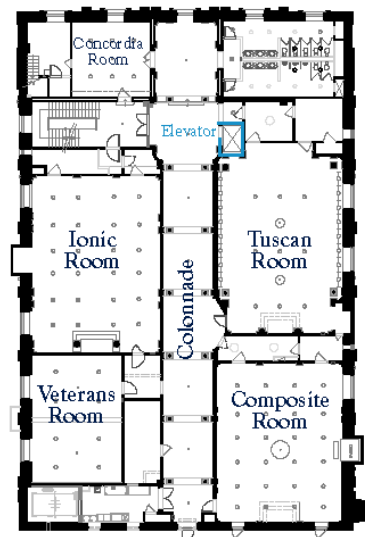
First Floor



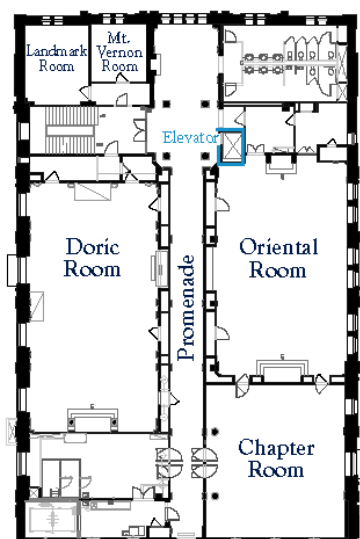
Second Floor



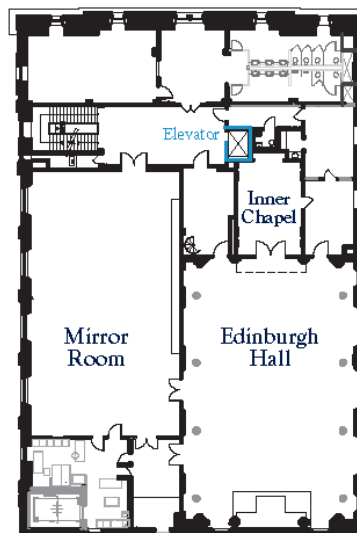
Third Floor



Fourth Floor



Fifth Floor



BWB
2014
NOLA

Join us again next spring for
Biodiversity Without Boundaries 2014
in the **Crescent City!**
Hotel Monteleone
New Orleans
April 6—April 10, 2014


NatureServe
A Network Connecting Science With Conservation
www.natureserve.org